



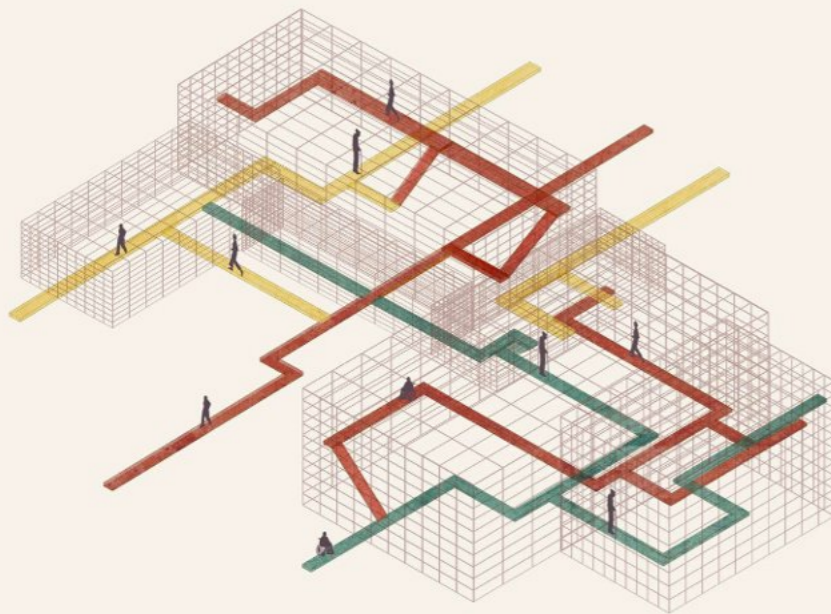
## 01 Visuals & Diagrams

As part of my submission to the Interior Educators Awards for the Climate Emergency category (2025), I created a series of visuals and diagrams that explained my design research and intent in an accessible way. As a result, the project was clearly represented and accessible, and I was shortlisted for this category



## 02 Digital Renders

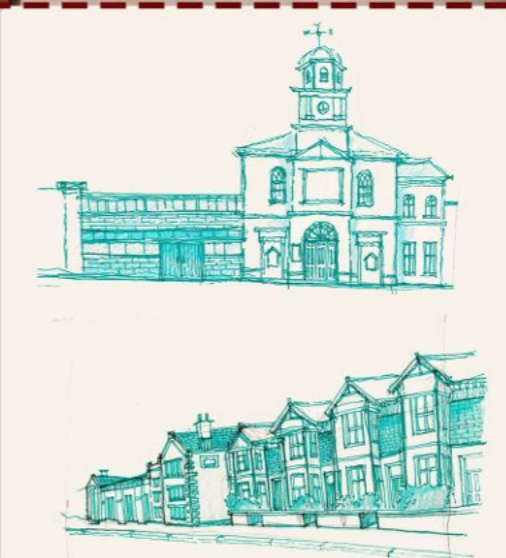
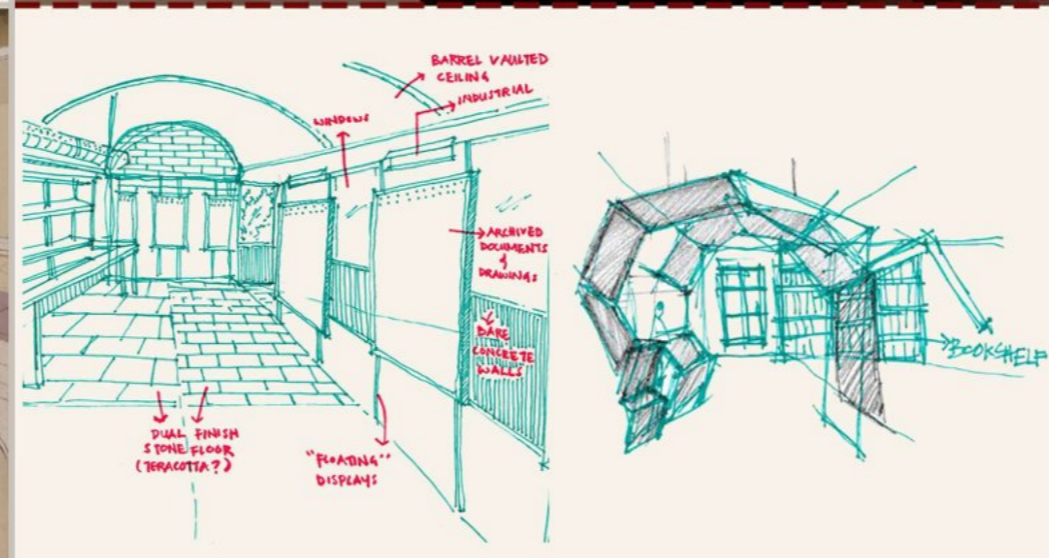
This project involved developing an interior strategy to transform Gracemount Mansion into a 21st-century community library. The task was to reinterpret the historic setting while proposing contemporary, functional spaces suitable for modern community use. I produced digital visualisations using a combination of Sketchup and Enscape to test and refine the design. As a result, I created a series of photorealistic renders that clearly communicated my design vision and spatial intentions



AINI ARINA FADZIL  
Selected Works

## 03 Sketches

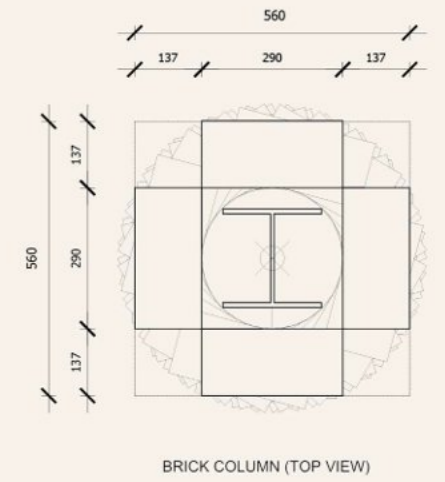
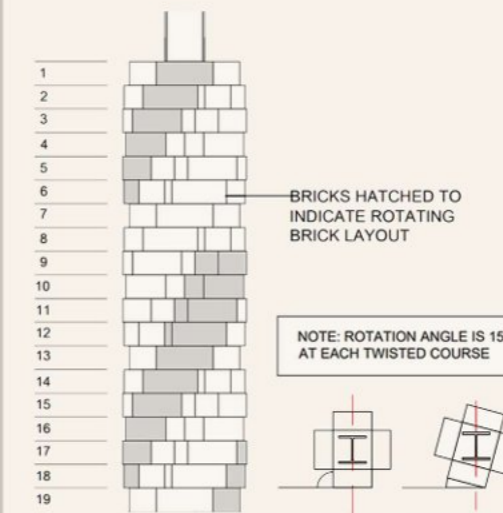
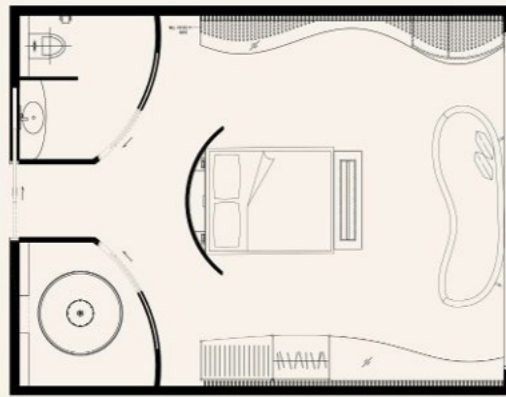
Highlighting my sketching and drawing skills across different phases of the design process, helping support clear visualisation and refinement of design intent. The leftmost image shows an observational drawing of an interior space whereas the teal ink sketches are developmental and site selection drawings produced during the design stage.



## 04

### Technical Drawings

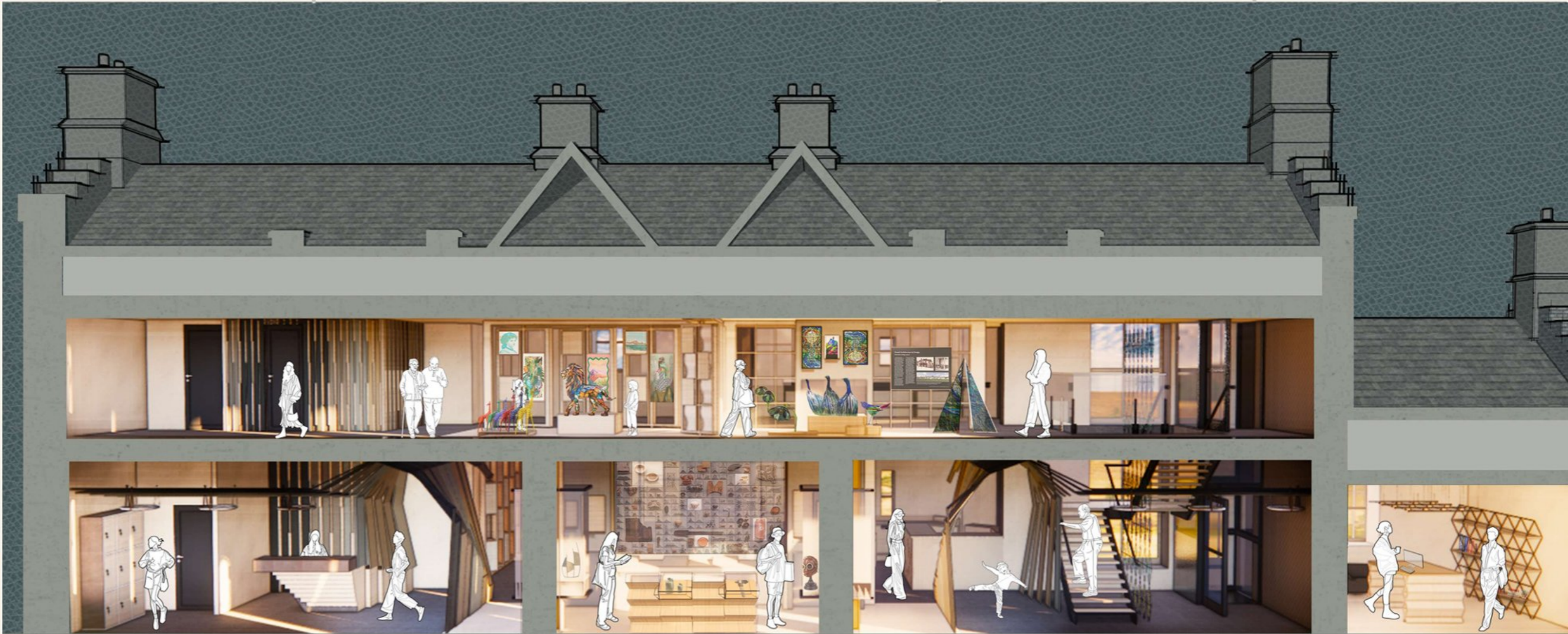
A variety of technical drawings that I produced across multiple projects during my undergraduate studies. From left to right, it includes a floor plan drawing, an elevation, a elevation detail drawing and a plan detail drawing. Collectively, these works demonstrate my understanding of interior design drawing conventions



## 05

### Illustration

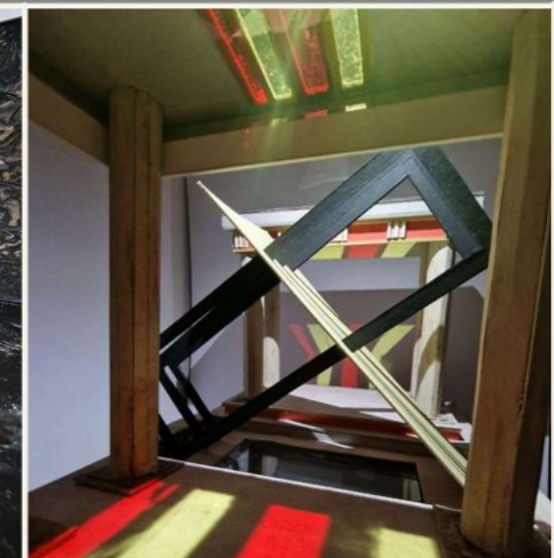
During second year, we were tasked with producing a sectional digital perspective to communicate the interior spaces and their spatial relationships. I developed and rendered this visual using a combination of Photoshop and Enscape. The result was a single cohesive combination of a 2D orthographic drawing with 3D renders. We were also given the opportunity to present our design to the professional design team responsible for the restoration of the Blackness Castle Officer's Quarters building



## 06

### Model Making

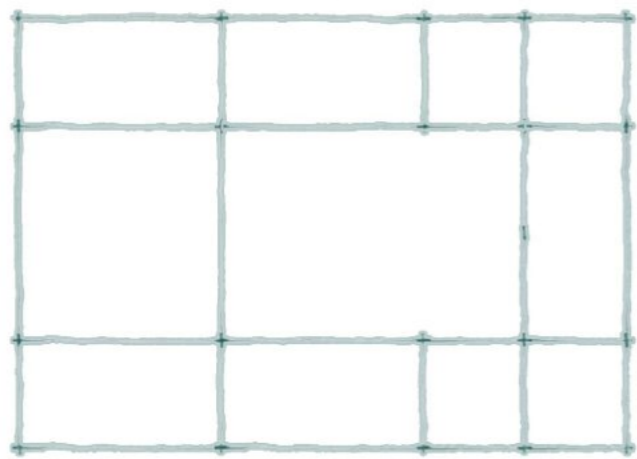
Demonstration of my model-making abilities through a variety of models. From left to right, the models include an example of a sketch concept model, a material palette model representing the site selected for my final project, an interior model exploring different textures and movable components, a close-up view of the lighting in a model



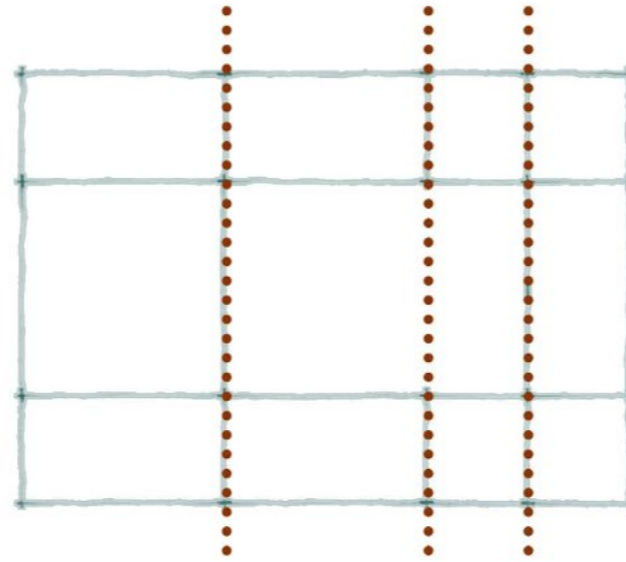
# PRINTOUT INSTRUCTIONS

1. Position the printed portfolio with the cover page facing upward
2. Follow the folding and cutting instructions according to the different "modes" outlined below
3. Each mode reveals a different way of navigating the portfolio
4. Follow instructions to ensure portfolio can be viewed as intended

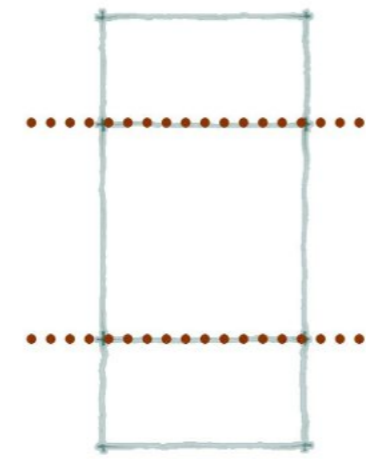
## Archive Mode | Compact configuration



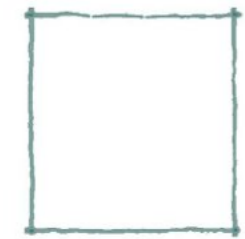
Print out the mini portfolio



Fold the portfolio along the vertical dotted line

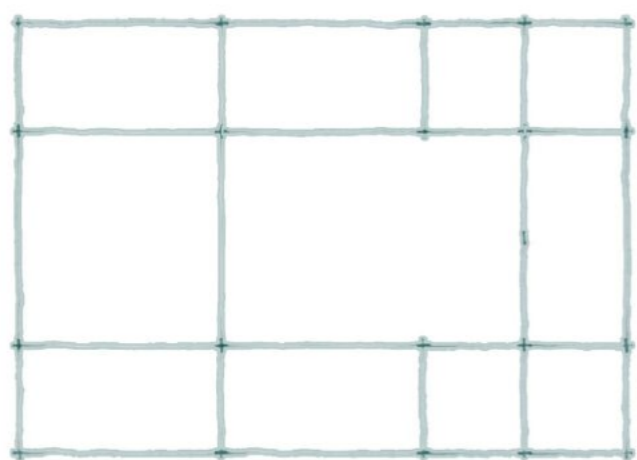


Fold the portfolio along the horizontal dotted line

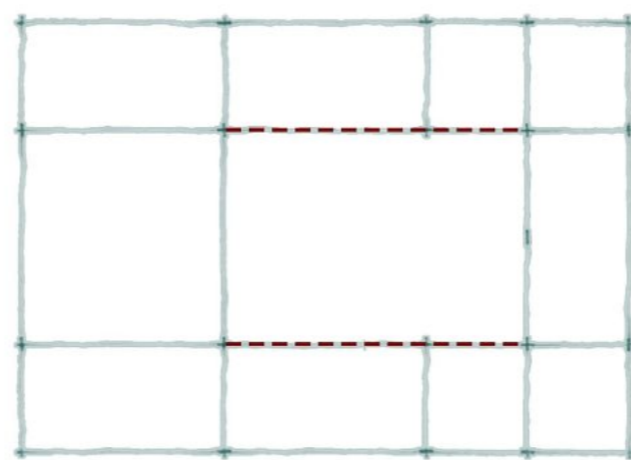


Pocket sized portfolio

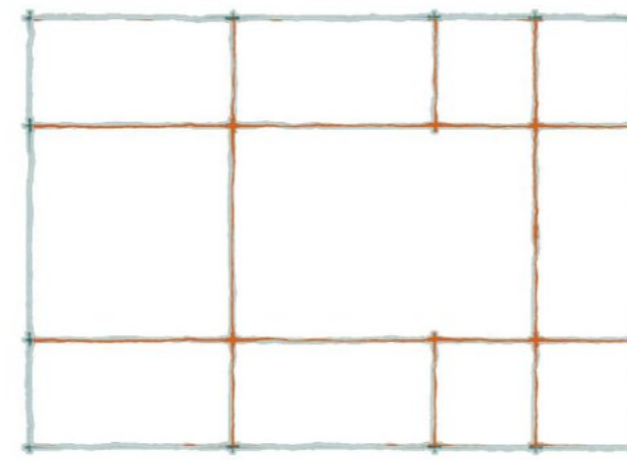
## Exhibition Mode | Public viewing format



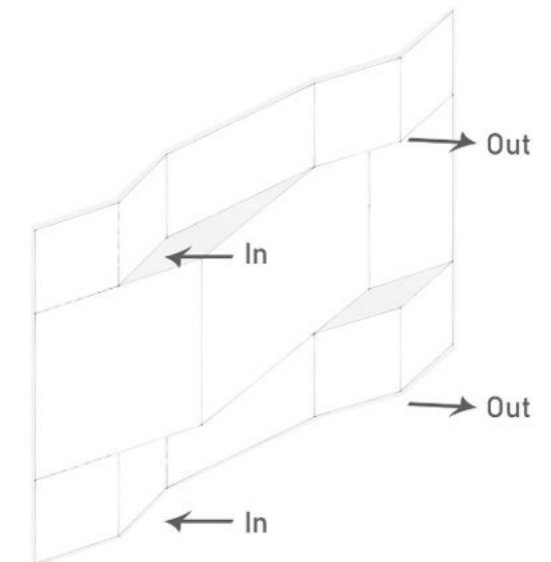
Print out the mini portfolio



Cut along the red dashed line



Fold along the lines of the images (orange lines in instructions) to make it stand easier



Push the sections of each row based on the diagram above