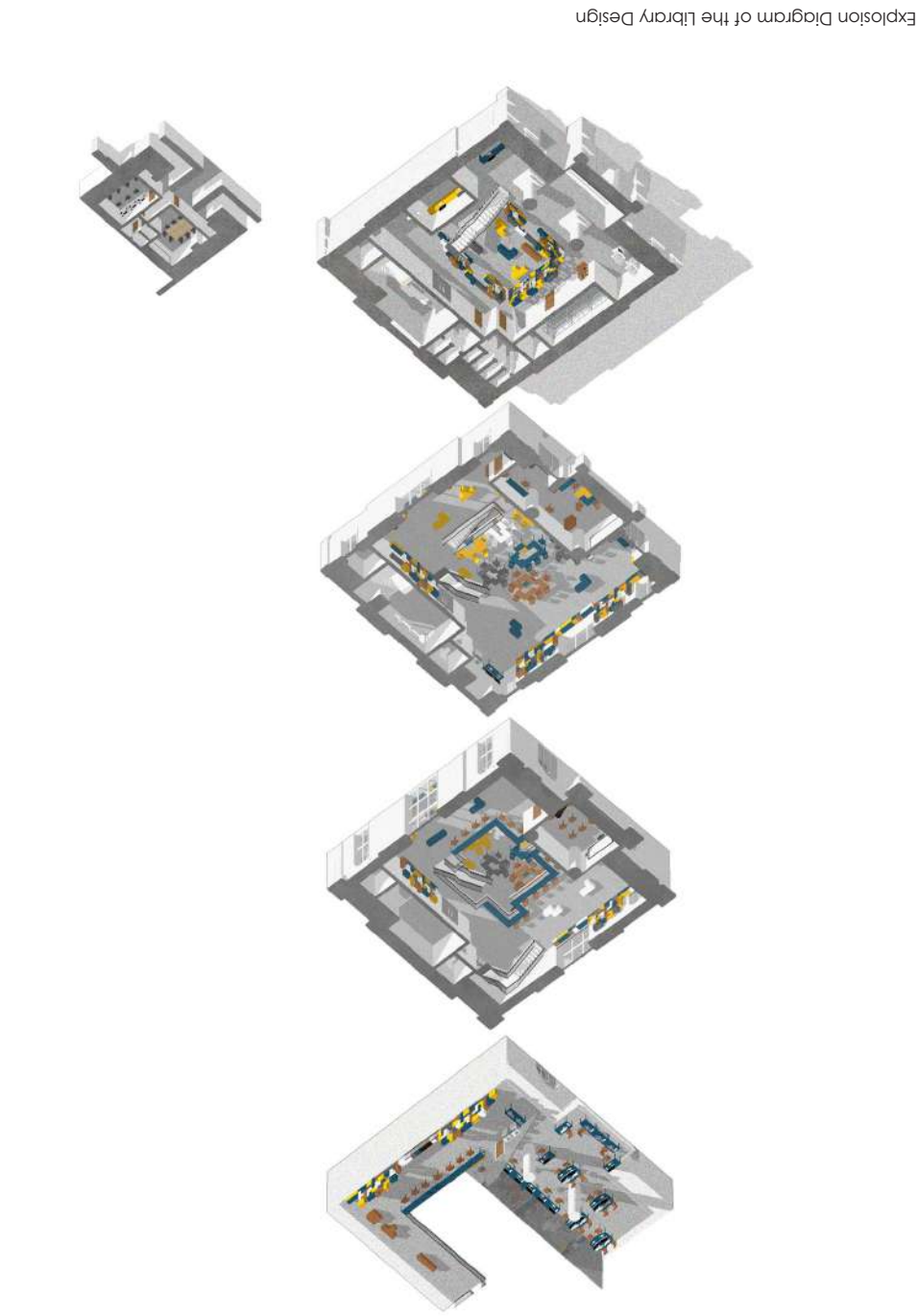


PORT FOR LIO

Yutong Zhang

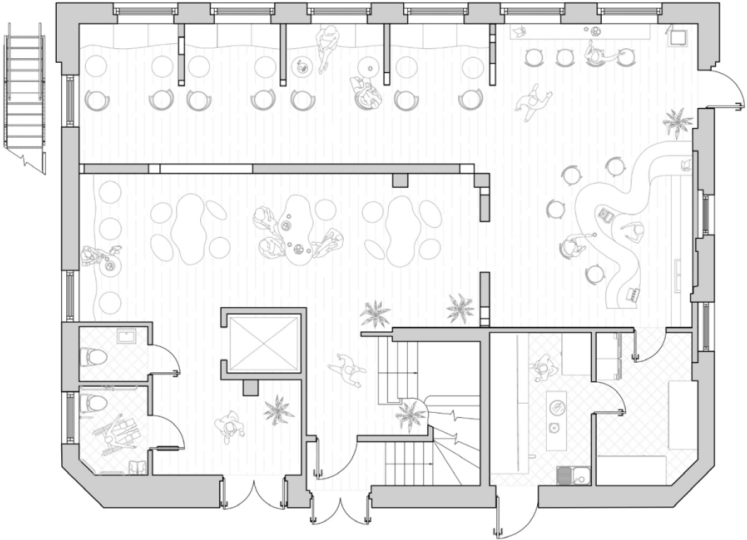
2025/



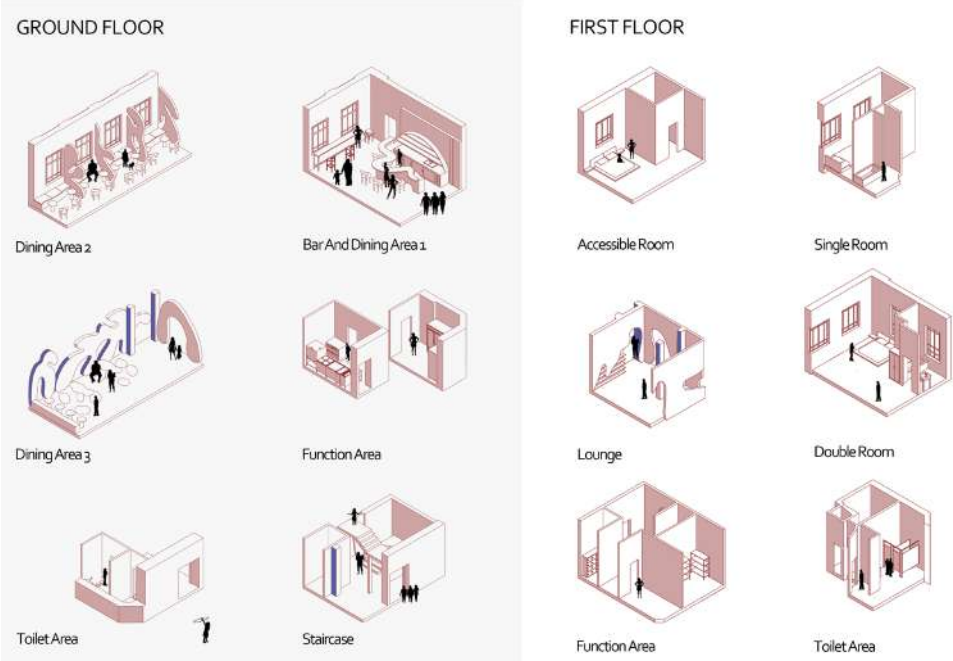
SAKE BAR



View of Key Space



Plan of the Key Space



Concept Drawing

The project is a Sake Bar inspired by City-Pop, a 1980s Japanese music subculture. Through space design, it aims to embody City-Pop culture while addressing mental health challenges in the post-pandemic era



Colour Section



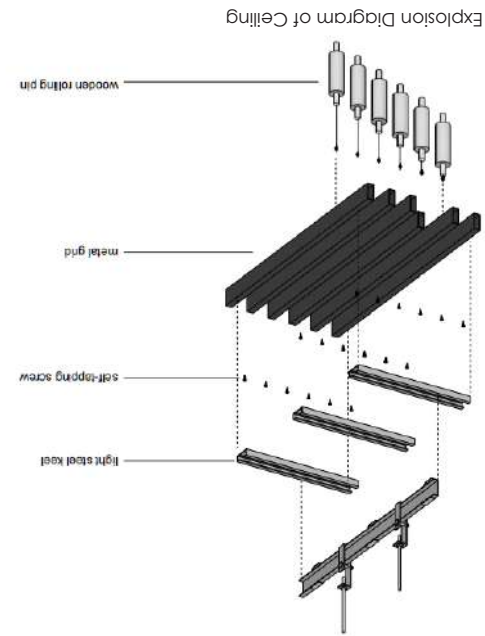
BAKERY SHOP



View of Key Space 1

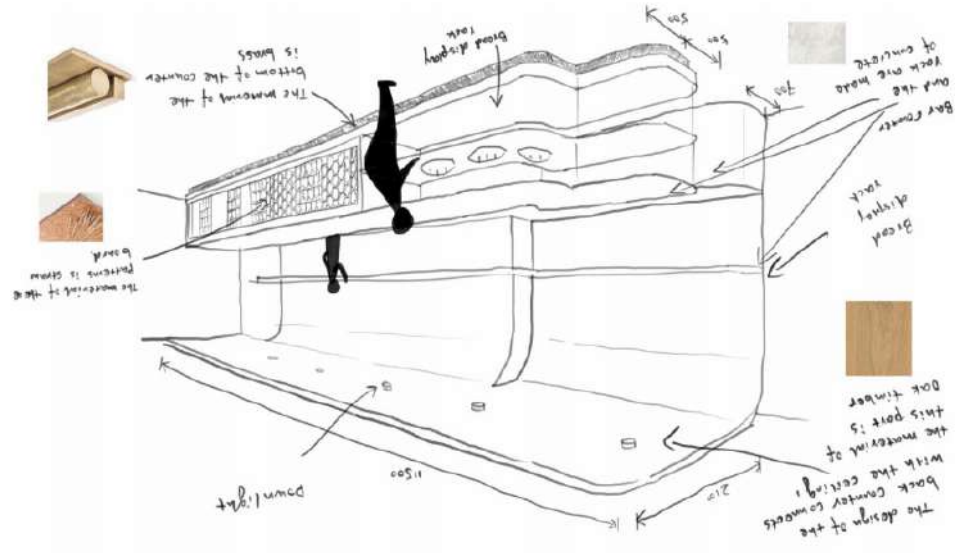
I aim to transform the chemical reactions in bread-making into indoor furniture, drawing inspiration from the wabi-sabi style.

Using earthy colours and minimalist designs, the space will reflect the raw materials of bread-making. Wheat straw board, a recyclable byproduct of wheat production, will serve as the primary material, promoting sustainability. The furniture, designed as functional artworks, will evoke rustic charm and the alchemy of bread-making, creating a tranquil ambience enriched by earthy textures and subtle aromas.

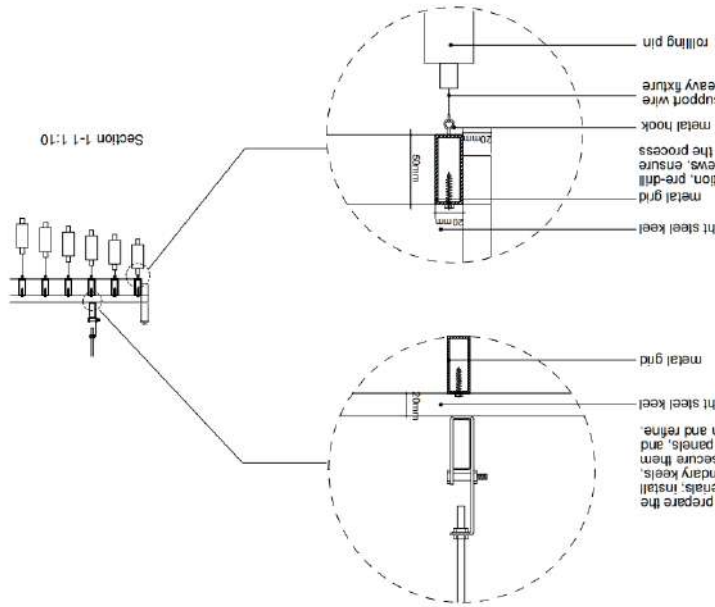


Exploded Diagram of Ceiling

Concept Drawing



Detail Drawing of Ceiling



LIBRARY

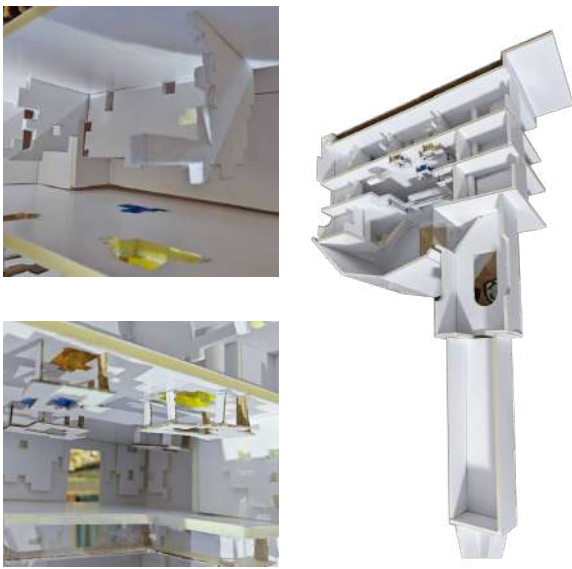


View of First Floor

The theme of the library design is Tetris, chosen for its shared concept of assembly and organization with libraries.

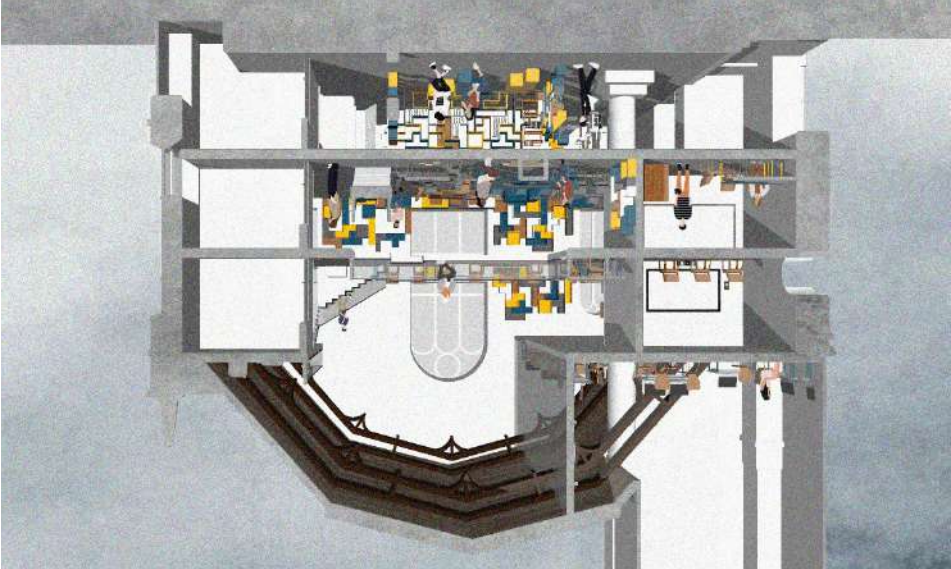
In Tetris, players fit blocks together to complete lines. Similarly, libraries serve as repositories of knowledge, where readers gather information from various sources, assemble ideas, and expand their understanding across subjects. Both involve structuring elements to create a harmonious and functional whole.

My design will incorporate Tetris-inspired modular elements to emphasize that assembly is a defining and essential characteristic of libraries.



Physical Model

Section



View of Second Floor