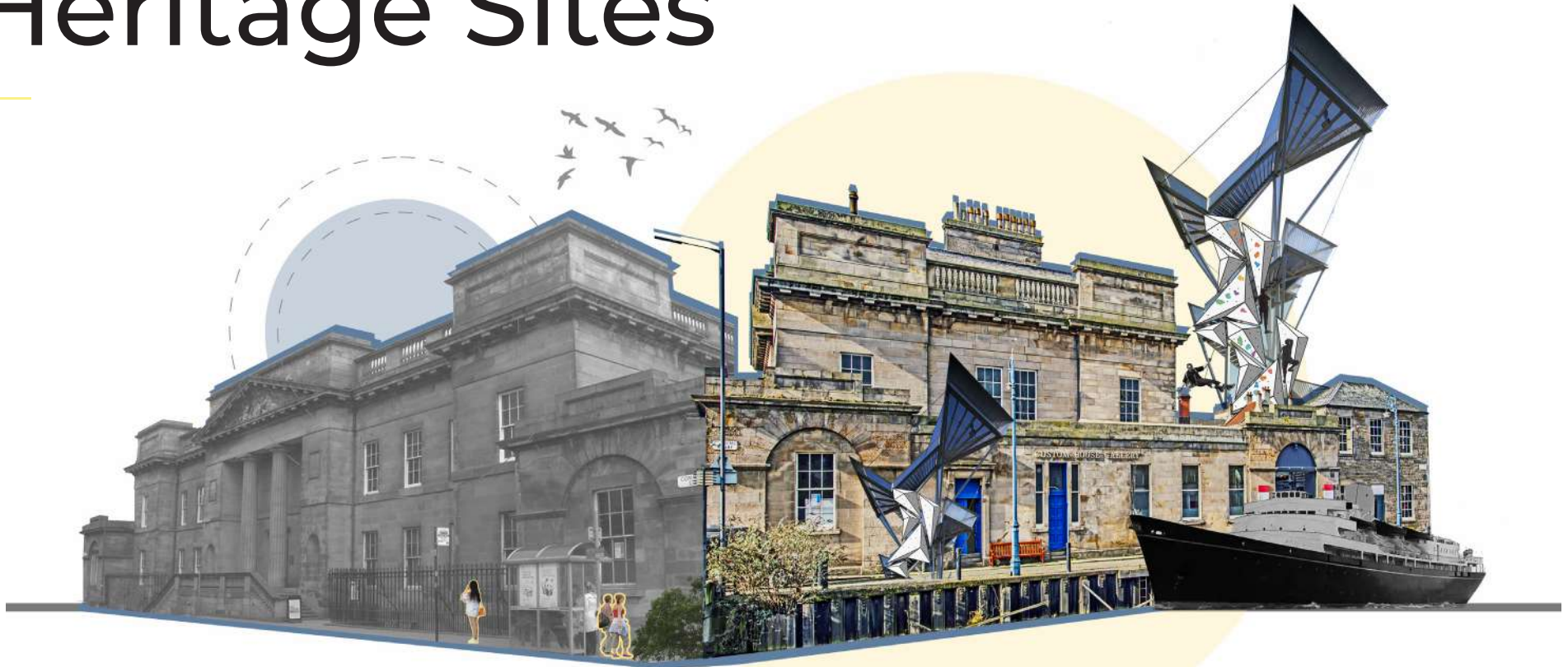


# Wayfinding in Heritage Sites

---



## Wayfinding in Heritage Sites Enhance Interaction and Experience

### Keywords:

User Experience in Heritage Sites, Hospitality, Model Making, Adaptive Reuse, Intervention, Environmental Graphics

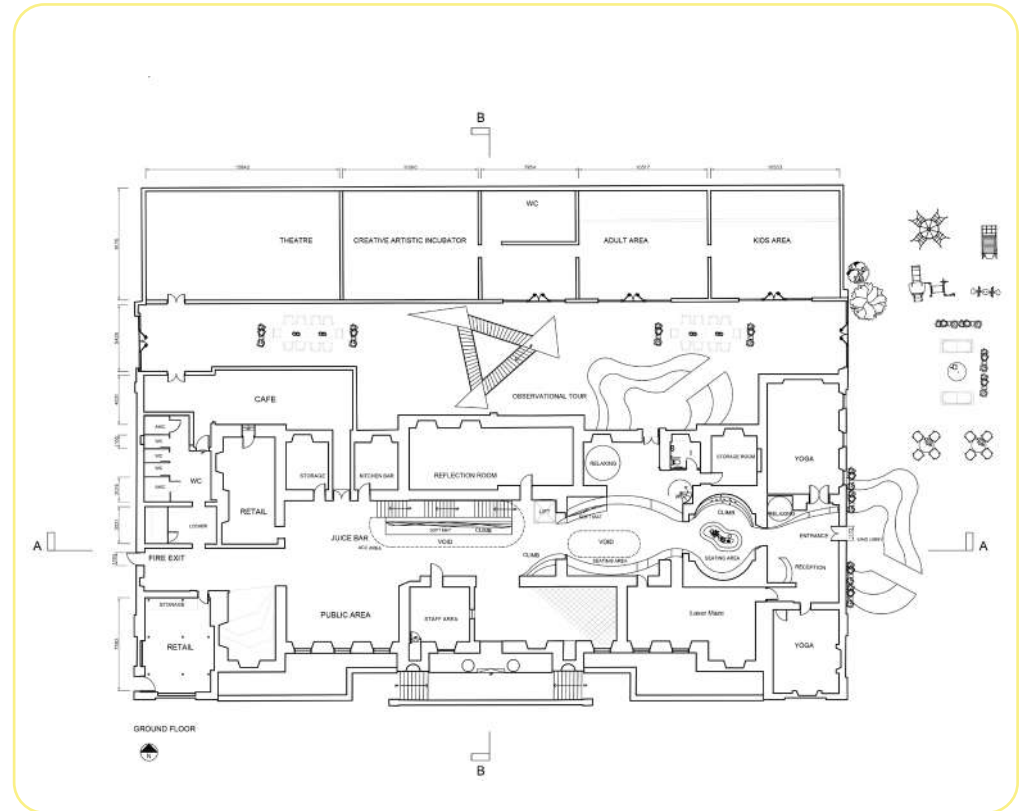
- How can wayfinding systems be designed to balance the preservation of historical integrity with modern accessibility needs in heritage sites?
- What role do environmental graphic design and digital technologies play in enhancing user experience and accessibility in heritage site wayfinding?
- How can wayfinding design at heritage sites incorporate cultural narratives to enrich visitor experience while maintaining site authenticity?

### Project

#### Outline:

This research aims to enhance visitor interaction and experience within heritage sites by blending innovative design solutions, technology, and cultural narratives. Using the Vibrant Culture Hub as a case study, the project redefines how heritage sites can be navigated and appreciated in the modern world. While the transformation of Custom House into the Vibrant Culture Hub has addressed some wayfinding challenges, additional aspects remain to be explored. This research will examine how graphics, signage, and digital enhancements can be integrated into historic settings without detracting from their architectural and cultural essence.

Furthermore, the research will explore how these wayfinding elements can express the site's cultural narratives, enriching the visitor's journey. Inclusivity and accessibility will be central to the solutions, ensuring they cater to all user groups. Insights from the Reading, Adapting, and Connecting Interiors courses will inform this investigation, enhancing its depth and relevance.

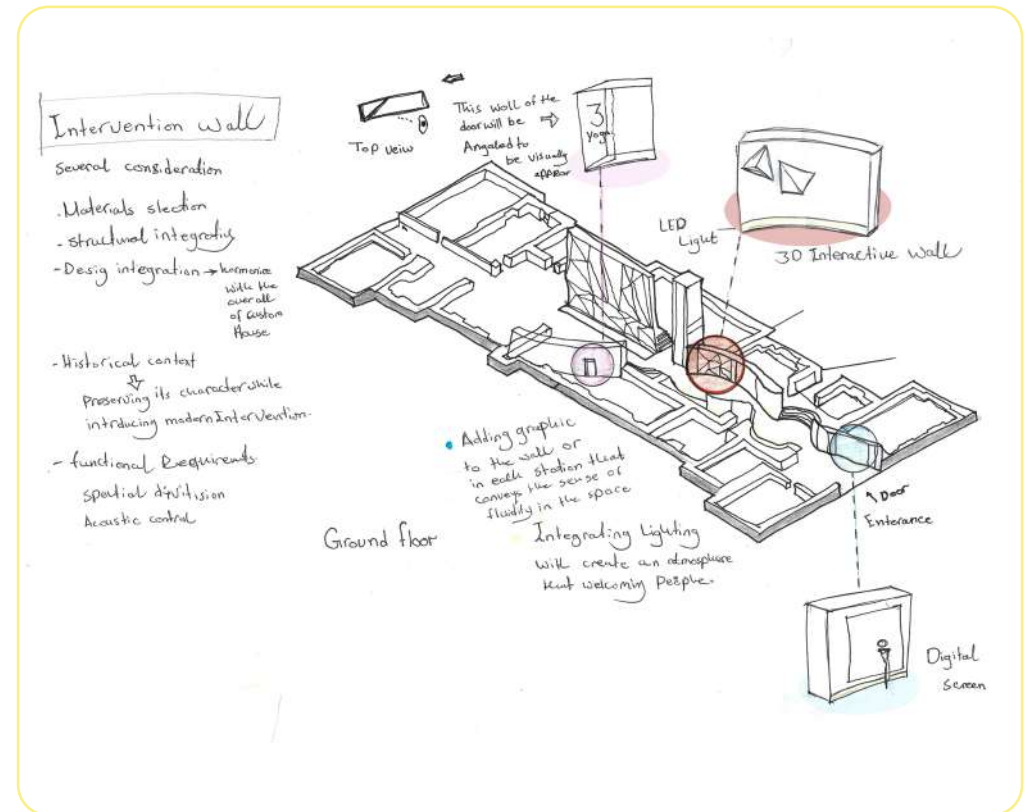


# Design Research

---

## Design of the Interiors

The Vibrant Culture Hub at Custom House aims to transform the historic building into a center for cultural expression and community engagement.



## Enhancing Spatial Experience through 3D Modeling

Creating a 3D model is vital for turning abstract concepts into tangible designs, enabling experimentation with lighting, textures, and spatial arrangements. This iteration, inspired by “Here East London” and the College of Education, focuses on an angled wall to improve visibility and guide users with color-coded wayfinding cues. The use of tactile materials enhances the sensory experience, balancing aesthetics and functionality in user-centric design.



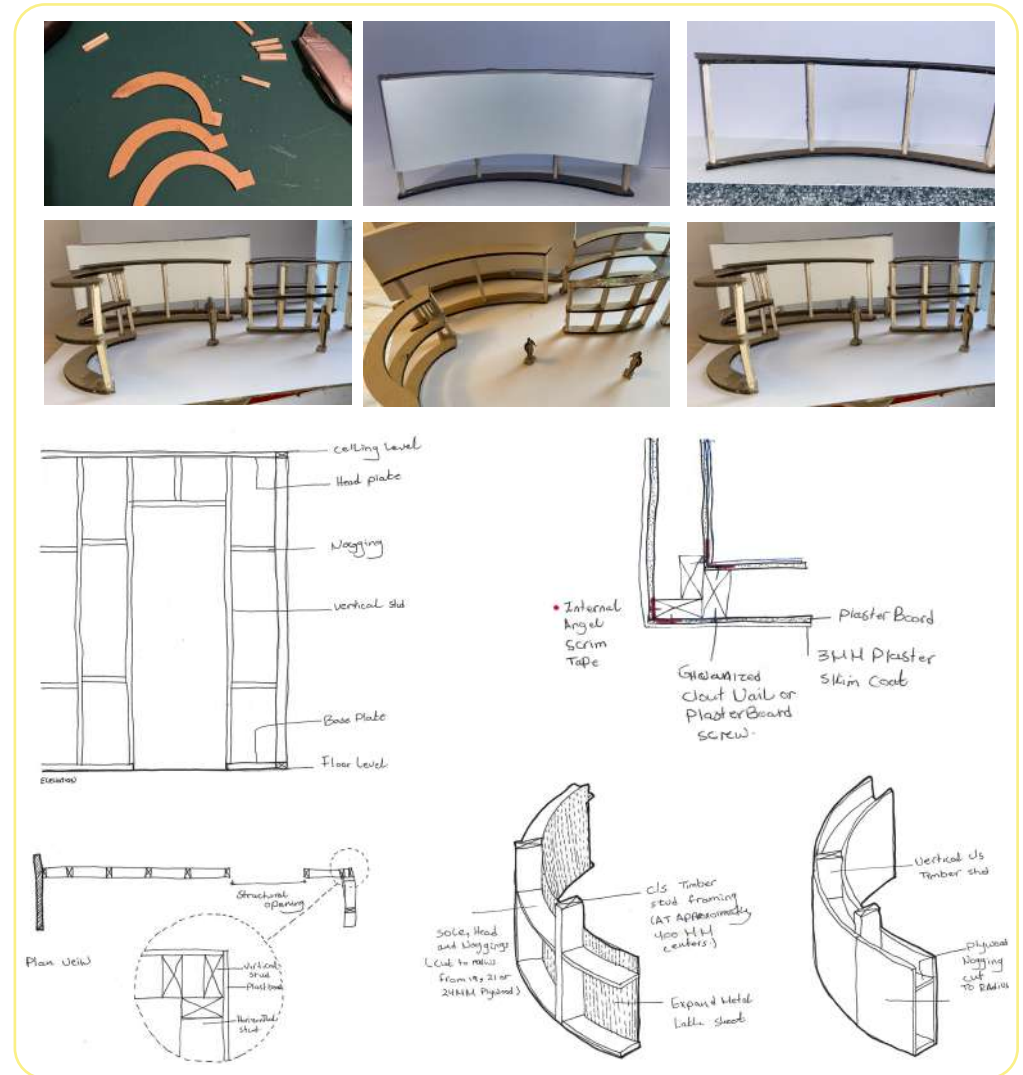
# Sustainability

---

## Efficient Partition Wall Construction

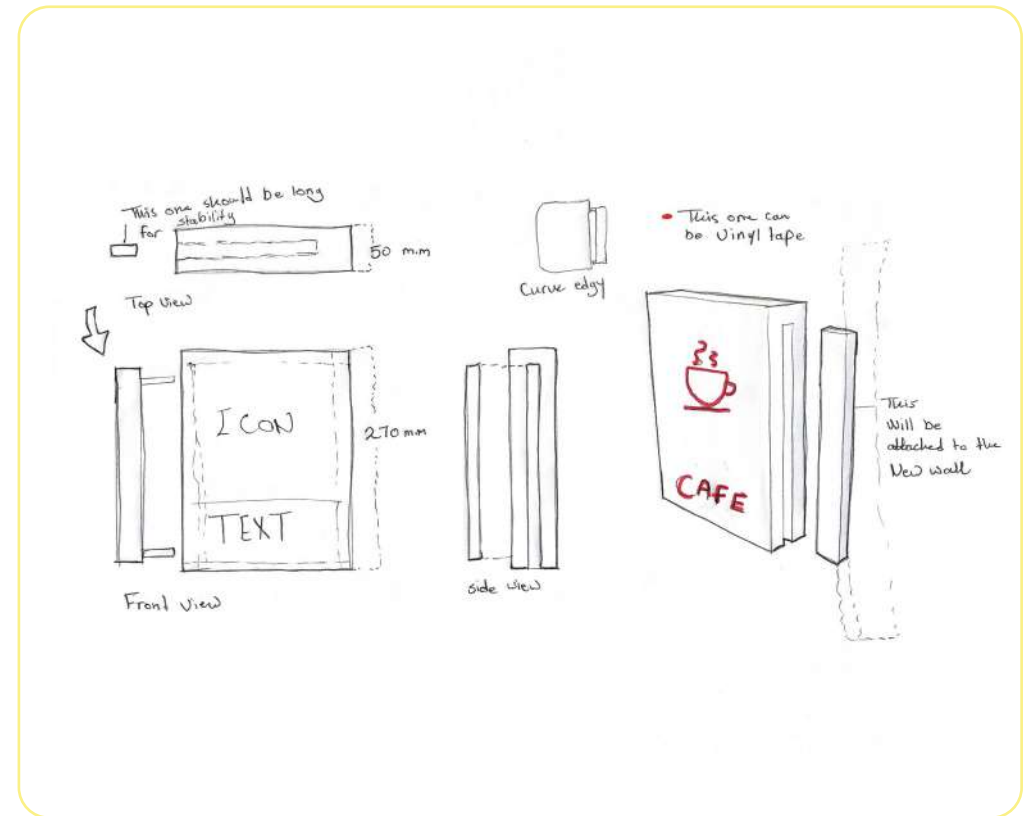
In this iteration, I prioritized the structural aspects of the wayfinding system, focusing on stability and durability for long-term functionality. By integrating robust support mechanisms and optimizing material weight distribution, I reinforced the design's foundation, essential for its aesthetic and functional layers.

For constructing non-loadbearing walls, I used stud partitions with wood or metal frames covered in plasterboard, offering a faster and more efficient alternative to traditional methods. I selected European Redwood (Scots Pine) for its strength and workability, ensuring stability with kiln-dried, FSC or PEFC certified wood, and considered pressure-treated timber for moisture-prone areas to enhance durability.



## Sustainable and Functional Signage Materials

In my design approach, inspired by the International Olympic Committee's "Environmental Impact Evaluation of Branding and Signage Solutions for Events," I emphasized sustainable material choices and end-of-life impact. Using a white box, energy-efficient LED lights, and durable vinyl tape icons ensures reduced energy consumption, waste, and consistent branding. The flexible design allows easy updates, adapting to future changes while minimizing environmental impact. To further enhance sustainability, I plan to switch to biodegradable paper tape, aligning with circular economy principles focused on prevention, reduction, reuse, and recycling.



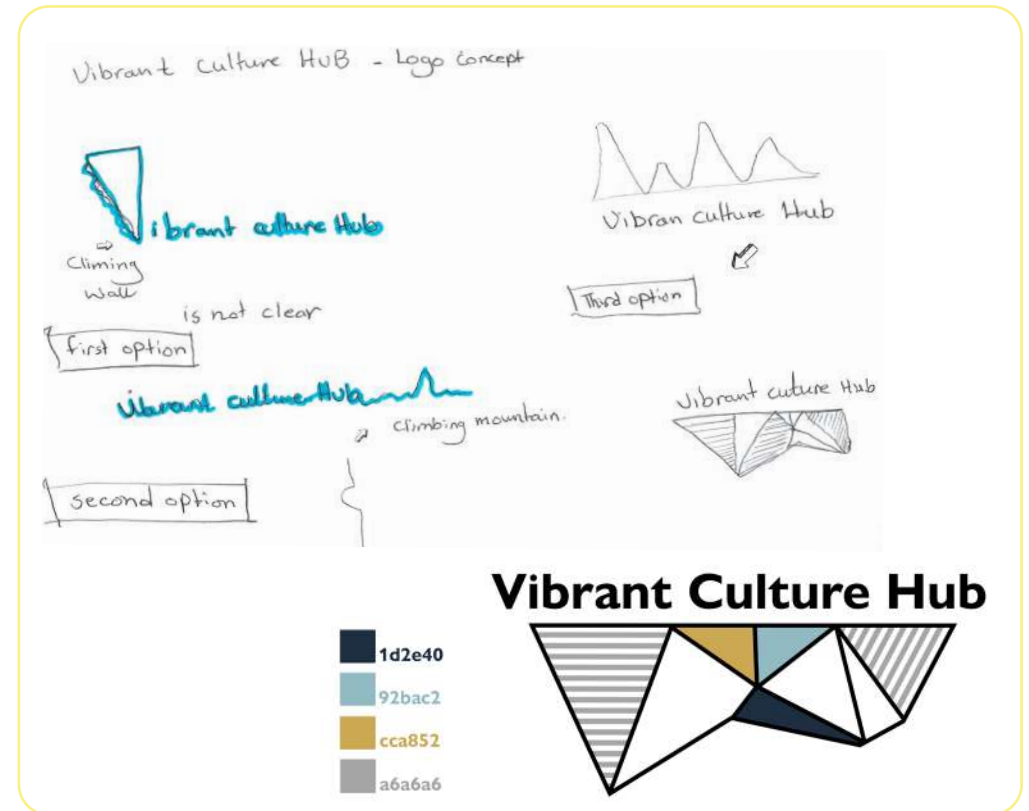


# Design Communication

---

## Vibrant Culture Hub Logo

The logo, featuring interconnected geometric shapes and a vibrant color palette, symbolizes the unity and creativity within the space.



## Typeface

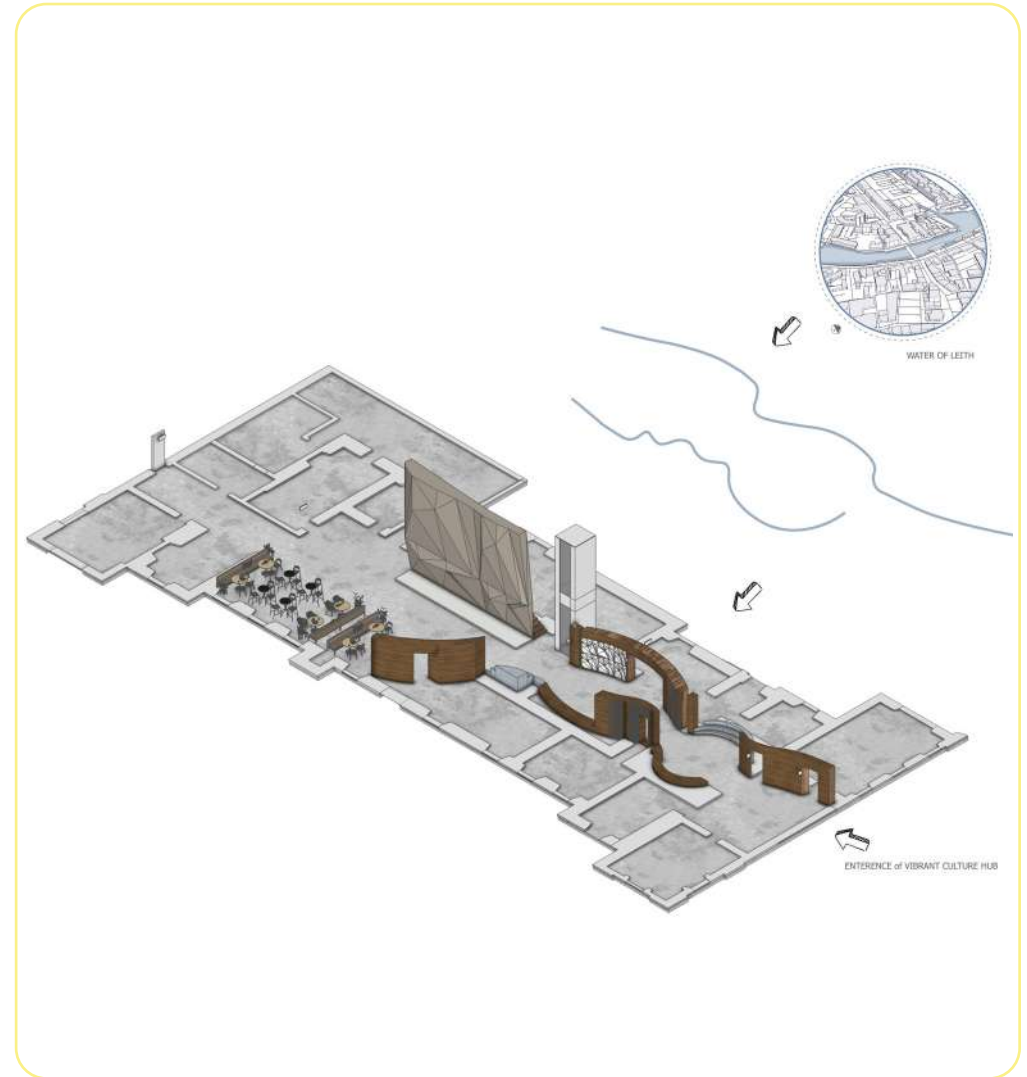
For the project, Arial Medium MT and Arial Light MT were chosen for signage due to their clarity, legibility, and alignment with Gestalt Theory and “Legible London” guidelines, ensuring ease of navigation.



Font Size	Clearly Readable (Distance)	Maximum Readable (Distance)
20mm	8m	12m
28mm	11m	17m
38mm	15m	23m
53mm	21m	34m
57mm	23m	36m
60mm	24m	36m
76mm	30m	48m
80mm	32m	48m
107mm	43m	68m
114mm	46m	64m
175mm	68m	103m
177mm	70m	105m
220mm	92m	137m
236mm	94m	142m
263mm	105m	158m
354mm	142m	212m

## Wayfinding Concept for Vibrant Culture Hub

Inspired by the Water of Leith River, the wayfinding system incorporates a curved wall that reflects the river's flow and history, guiding visitors through the space. The design includes interactive features, recycled materials, and a color palette of blues and greens, enhancing both functionality and aesthetics.



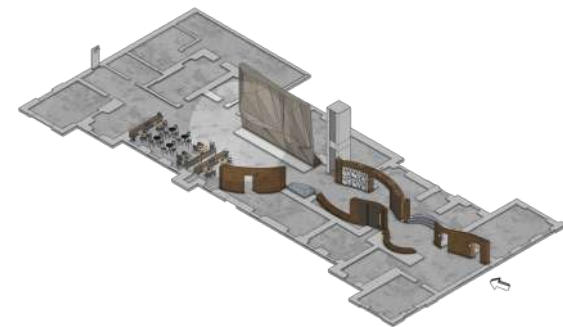
## Final Render Outcome 1

This rendered perspective of the Vibrant Culture Hub at Custom House combines historical architecture with modern wayfinding. It features adaptive walls with clear signage in distinct colors, intuitive symbols for accessibility, and material like local wood to enhance aesthetics. Integrated lighting improves visibility, and indoor plants create a calming atmosphere. The design, which operates without a reception desk, simplifies navigation, guiding visitors through key areas like event rooms, and is scalable and sustainable for future needs.



## Final Render Outcome 2

This perspective highlights a vibrant space with clear zoning, featuring a central climbing wall as a key navigation element. Natural lighting, vibrant colors, greenery, and improved acoustics enhance functionality, while cultural elements and local art strengthen community connections.



## Final Render Outcome Exterior Design

The triangular form integrated into the façade enhances architectural complexity and echoes the adventurous spirit of the climbing wall. This geometric motif, extending to the observational tower and mezzanine, unifies the design and adds vibrancy through the logo's color palette. It transforms the exterior into a landmark that aligns with the site's cultural and recreational identity, ensuring the building meets both practical needs and community spirit.



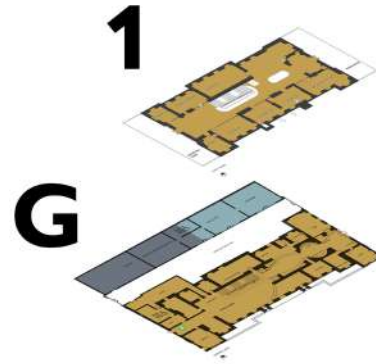
# Graphic and Signage Features in the Wayfinding System

## LOGO DESIGN

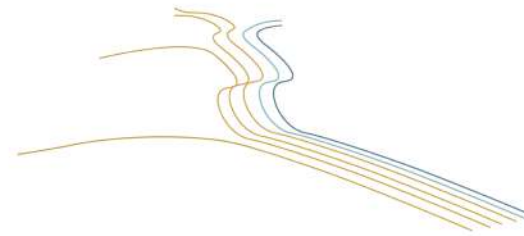
Vibrant Culture Hub



## COLOUR CODE DESIGN



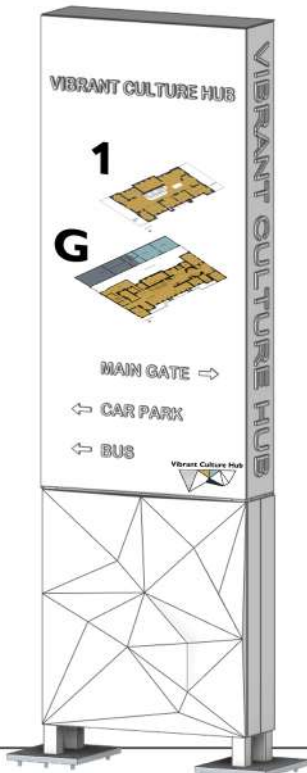
## FLOOR GRAPHIC DESIGN



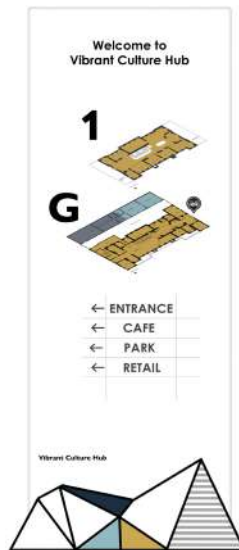
## WALL GRAPHIC DESIGN



## PYLON SIGNAGE



## MOVABLE SIGNAGE



## GLASS MANIFESTATION

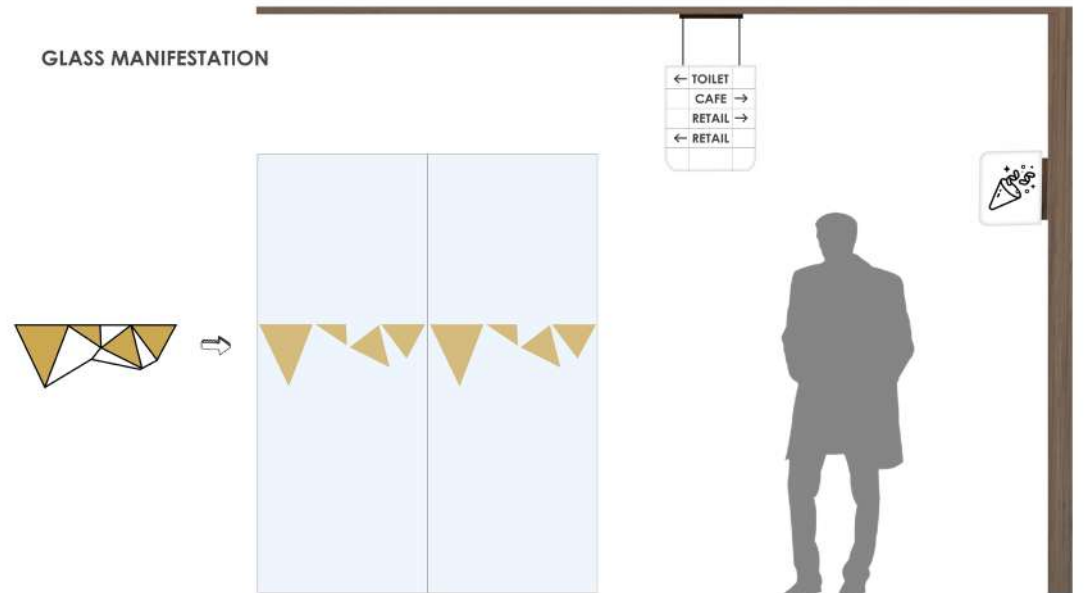
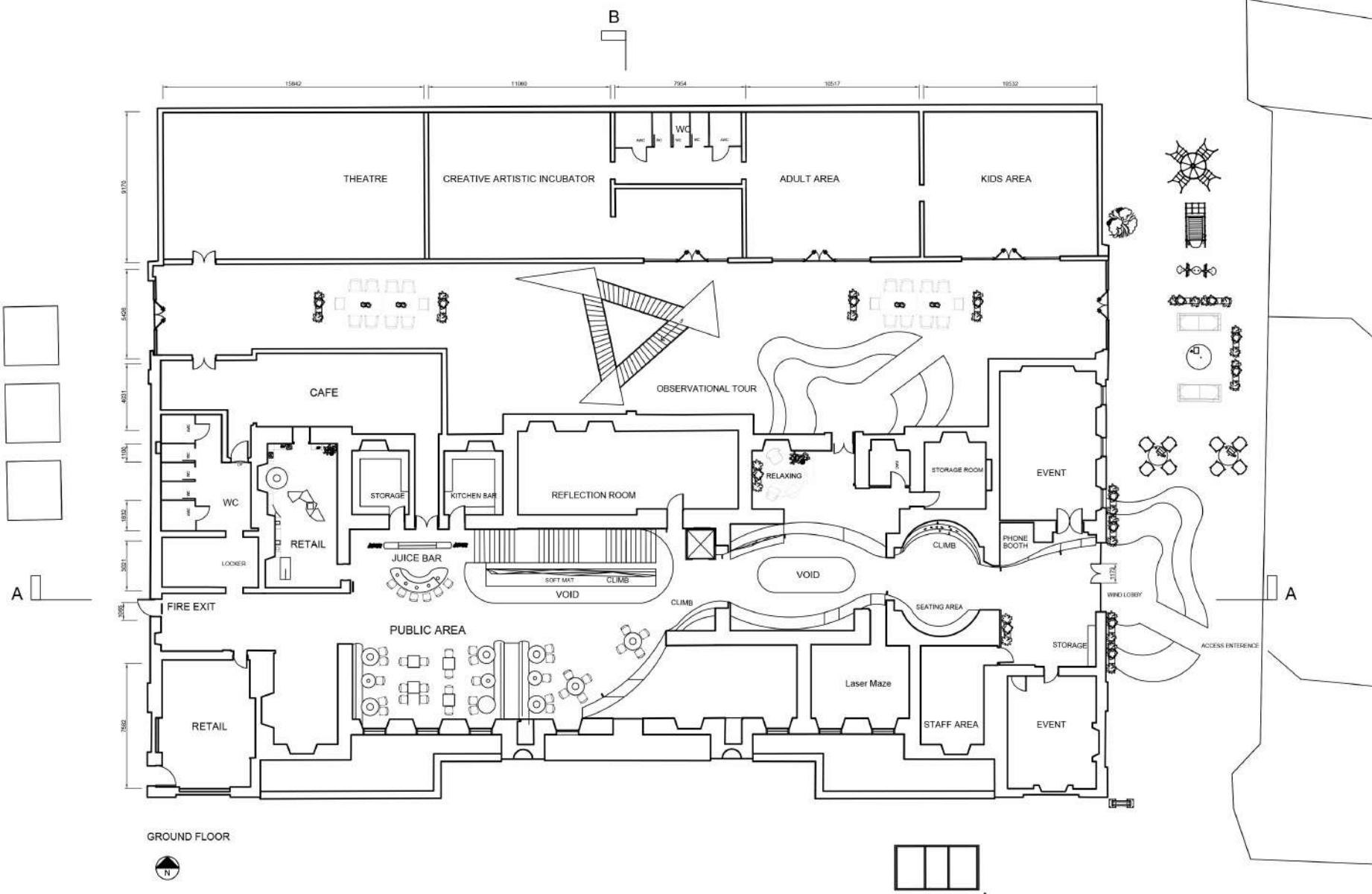


Figure 46



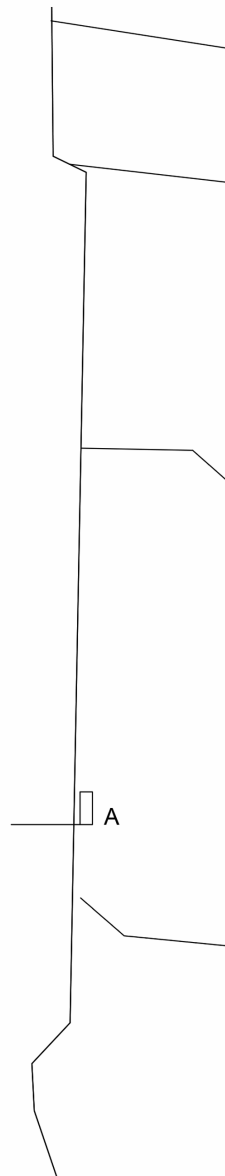
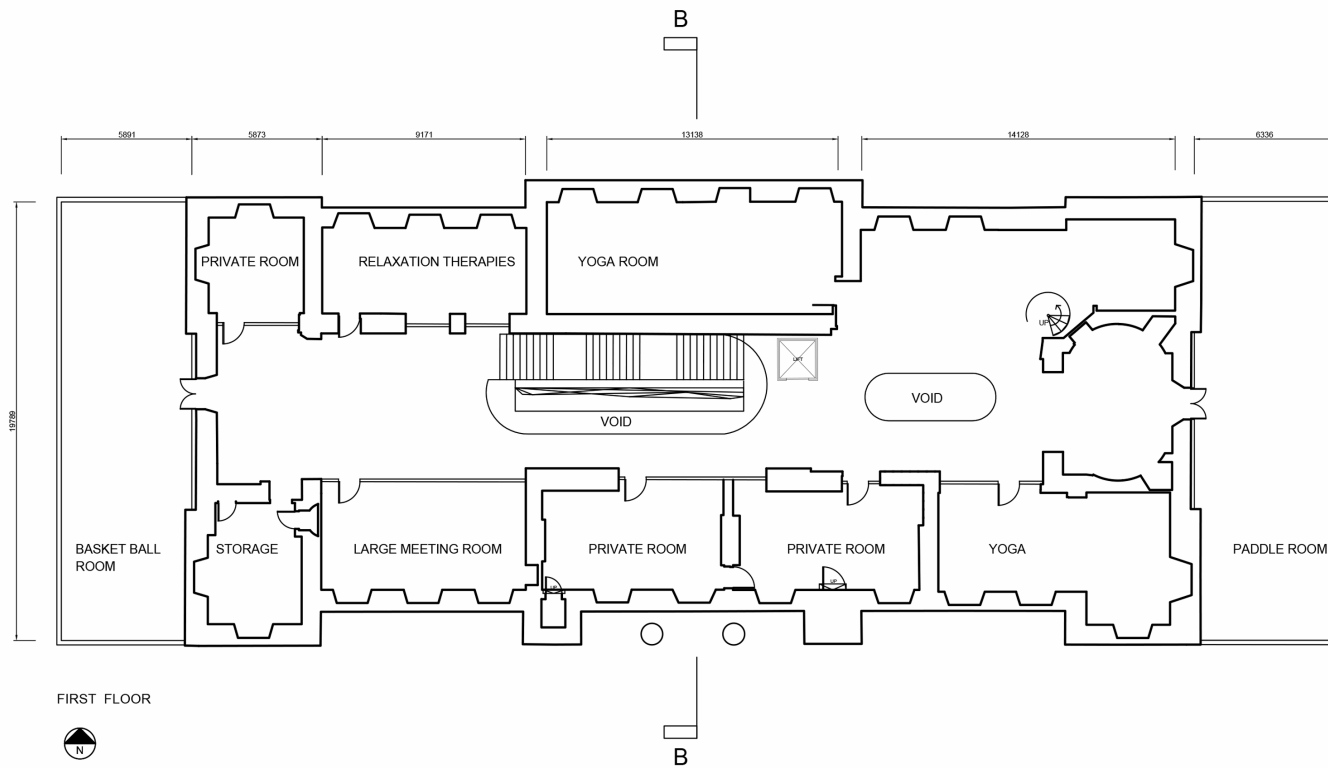


<b>Name</b>	
Slma Bahuwayrith	
<b>Project Title</b>	
VIBRANT CULTURE HUB	
<b>Drawing Title</b>	
VIBRANT CULTURE HUB- FLOOR PLAN	

<b>Scale</b>	<b>Date</b>
not scale	8-80-2024

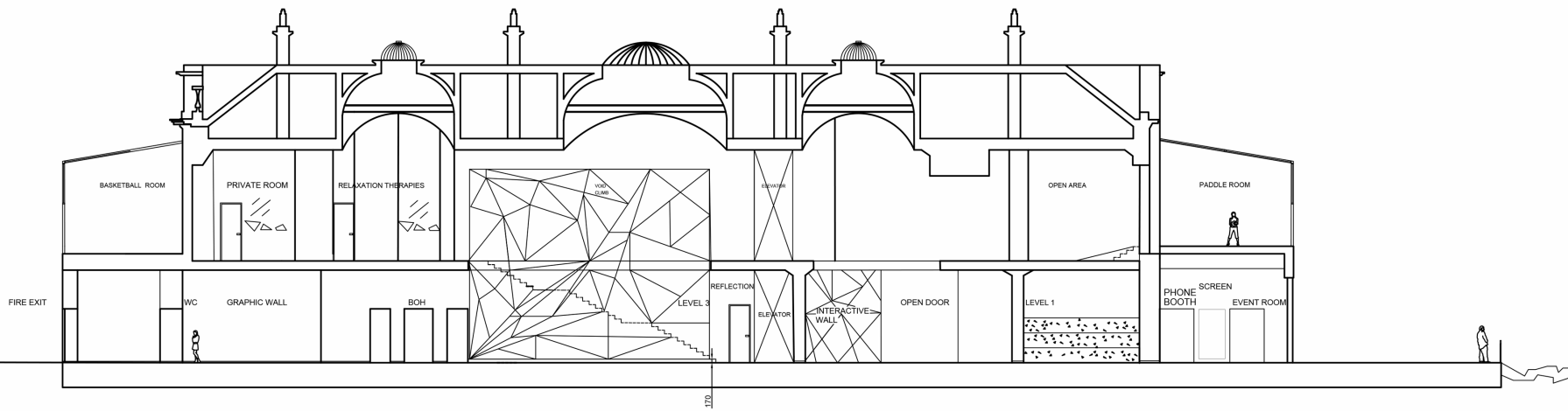


A



<b>Name</b>	
Slma Bahuwayrith	
<b>Project Title</b>	
VIBRANT CULTURE HUB	
<b>Drawing Title</b>	
VIBRANT CULTURE HUB - FLOOR PLAN	

<b>Scale</b>	<b>Date</b>
not scale	8-80-2024



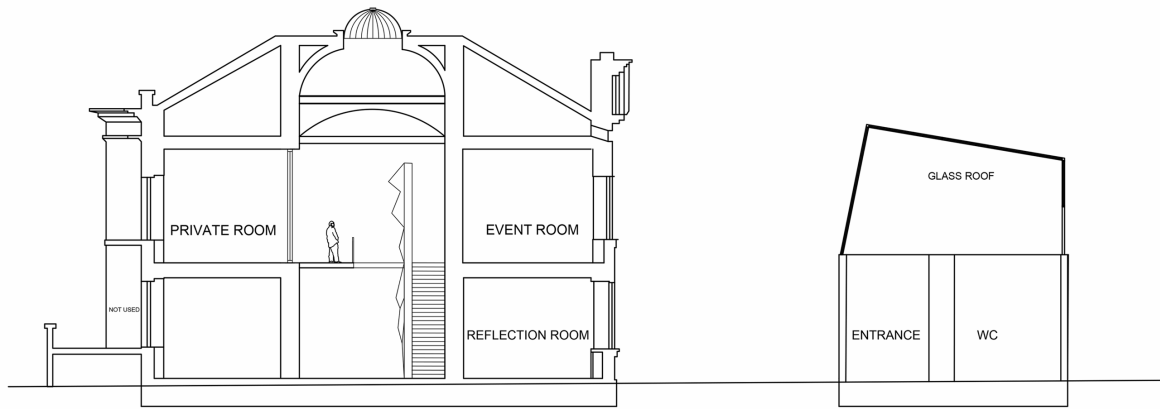
SECTION A-A

**Name**  
Slma Bahuwayrith

**Project Title**  
VIBRANT CULTURE HUB

**Drawing Title**  
VIBRANT CULTURE HUB - FLOOR PLAN

Scale	Date
not scale	8-80-2024



SECTION B-B

Name

Slma Bahuwayrith

Project Title

VIBRANT CULTURE  
HUB

Drawing Title

VIBRANT CULTURE HUB-  
FLOOR PLAN

Scale

not scale

Date

8-80-2024

TOP PLATE  
 MATERIAL: PLAIN CARBON  
 STEEL  
 ITEM: PAINTED COLD  
 GALVANIZED  
 THICKNESS: 2MM  
 QUANTITY: 1  
 SUPPLIER: DEXION STORE  
 CONTACT: 0808 239 7030

LED TRAY 0.55MM  
 MATERIAL: PLAIN  
 CARBON STEEL  
 ITEM: COLORBOND  
 WHITE  
 QTY: 1

VIBRANT CULTURE HUB  
 LETTERING 6MM  
 ALUMINUM  
 MATERIAL: 6061 ALLOY  
 FINISH: PT.01 -  
 2PAK PAINTED BLACK  
 SATIN  
 QTY.: 2

BASE CLADDING PANEL  
 MATERIAL: 6061 ALLOY  
 THICKNESS: 3MM  
 QUANTITY: 2  
 ITEM: TRIANGULAR PRISM PATTERN  
 WEBSITE: BLAKE GROUP  
 CONTACT: 0131 554 1646

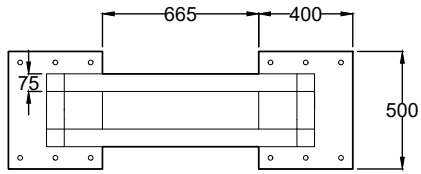
SIDE CLADDING BACKING  
 PANEL 2MM  
 MATERIAL: 6061 ALLOY  
 THICKNESS: 3MM  
 QUANTITY: 2  
 ITEM: PT.04 - 2PAK  
 PAINTED PMS 423C SATIN  
 WEBSITE: BLAKE GROUP  
 CONTACT: 0131 554 1646

Z SECTION  
 MATERIAL: 6061 ALLOY  
 QUANTITY: 8  
 ITEM: MILL FINISH  
 WEBSITE: BLAKE GROUP  
 CONTACT: 0131 554 1646

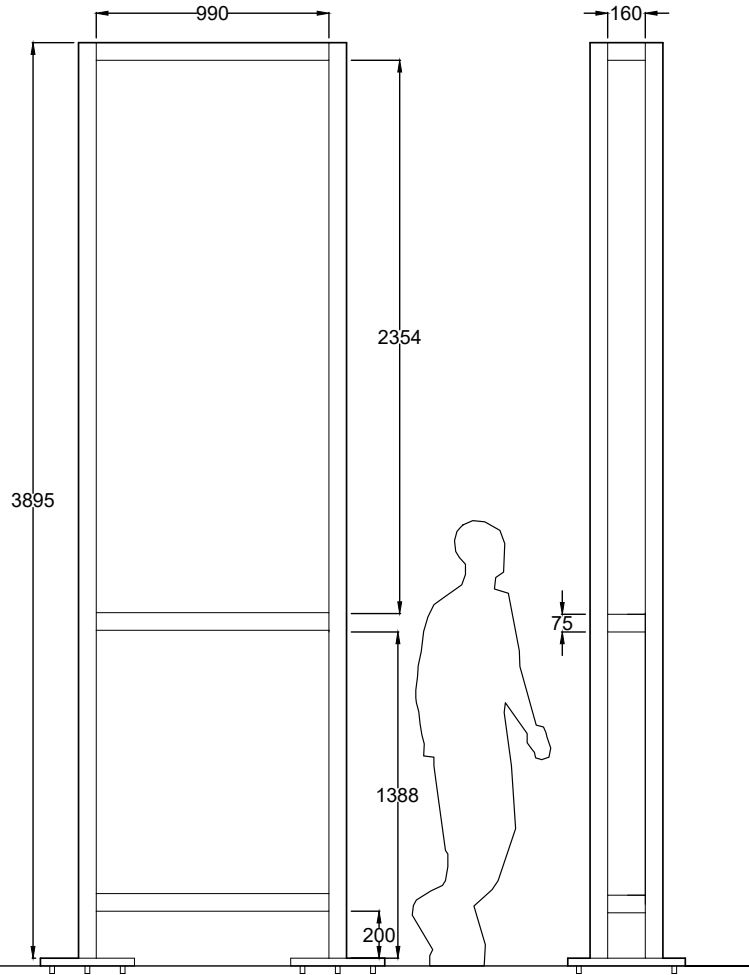
STEEL SHS  
 DIMENSIONS: 75 X 75 X 3MM  
 QUANTITY: 3 DIFFERENT SIZES  
 SUPPLIER: DEXION STORE  
 CONTACT: 0808 239 7030

AXO  
 Scale 1:20

<b>Name</b>	
Slma Bahuwayrith	
<b>Project Title</b>	
VIBRANT CULTURE HUB	
<b>Drawing Title</b>	
PYLON SIGN	
<b>Scale</b>	<b>Date</b>
1:20 @ A3	31-70-2024



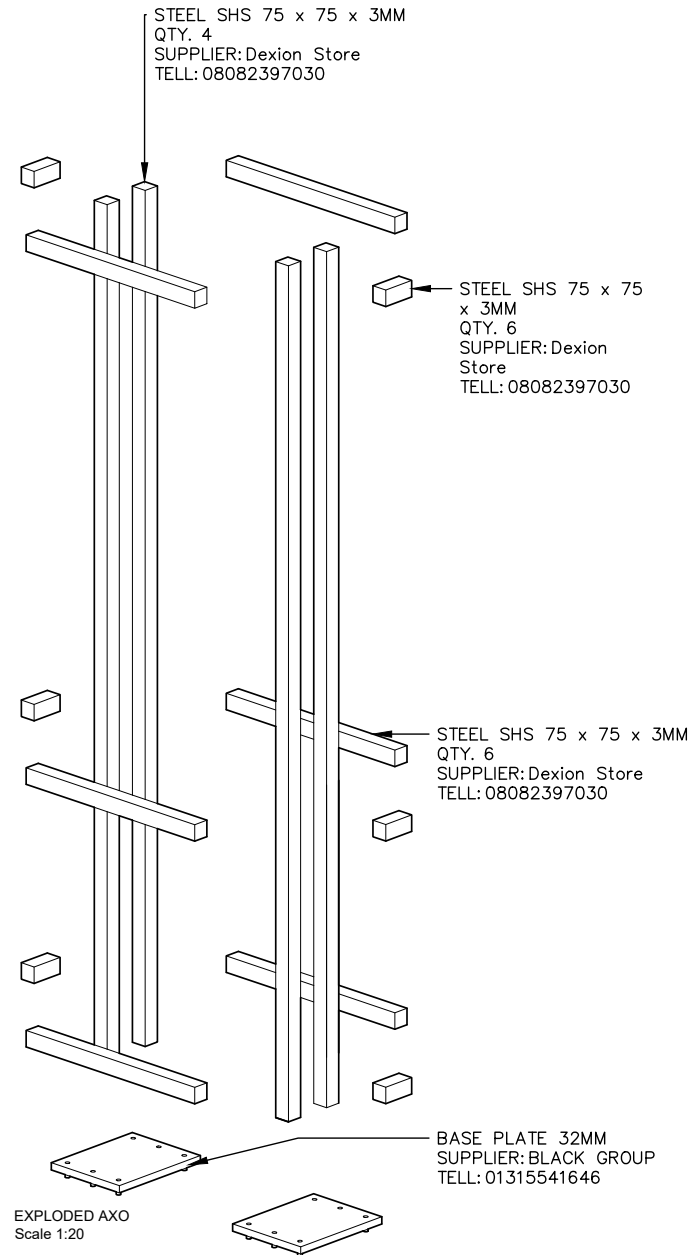
TOP VIEW  
Scale 1:20



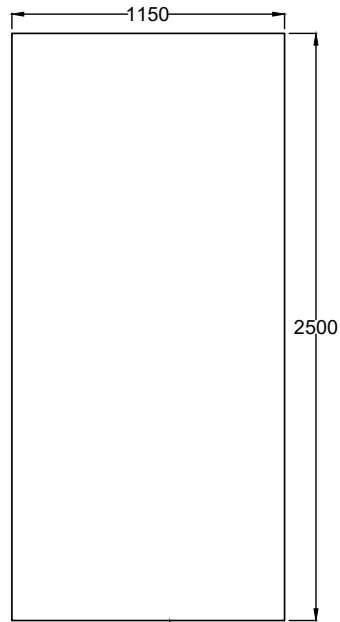
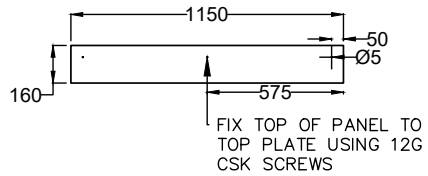
ELEVATION  
Scale 1:20

SECTION AA  
Scale 1:20

FRAME STRUCTURE SIGN DESIGN

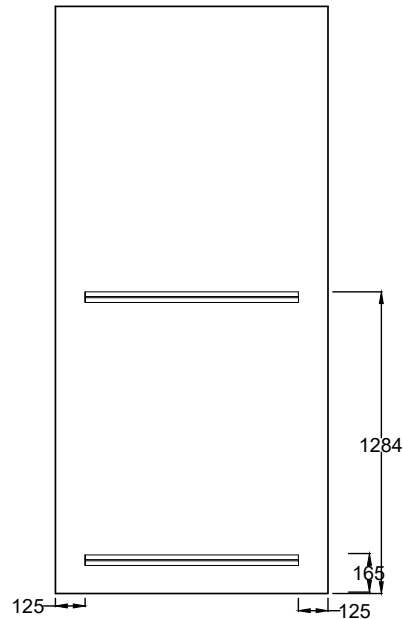


<b>Name</b>	
Silma Bahuwayrith	
<b>Project Title</b>	
VIBRANT CULTURE HUB	
<b>Drawing Title</b>	
PYLON SIGN	
<b>Scale</b>	<b>Date</b>
1:20 @ A3	31-70-2024

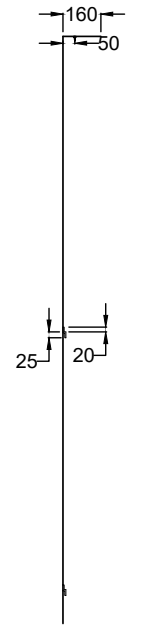


FRONT ELEVATION  
Scale 1:20

ITEM: FACE CLADDING  
FRONT  
MATERIAL: 6061 ALLOY  
FINISH: PT.02 - 2PAK PAINTED  
WHITE SATIN  
QTY.2

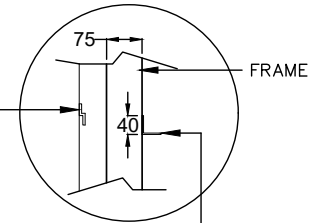


BACK ELEVATION  
Scale 1:20



LEFT ELEVATION  
Scale 1:20

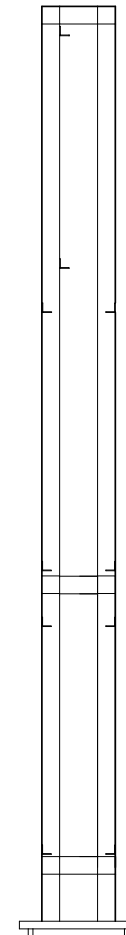
Z SECTION ATTACHED TO THE FRONT PANEL TO SUPPORT ANGLED JOINTS



DETAILED JOINTS  
Scale 1:10

STEEL ANGLE ATTACHED TO THE FRAME TO HOLD THE FRONT PANEL

ITEM: STEEL ANGLE  
DESCRIPTION: 40 x 40 x 3MM  
MATERIAL: PLAIN CARBON STEEL  
LENGTH (mm): 1140  
QTY.10

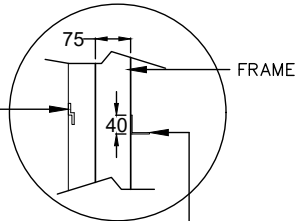


FRAME  
Scale 1:20

FACE CLADDING FRONT

<b>Name</b>	
Sima Bahwayrith	
<b>Project Title</b>	
VIBRANT CULTURE HUB	
<b>Drawing Title</b>	
PYLON SIGN	
<b>Scale</b>	<b>Date</b>
1:20 @ A3	31-70-2024

Z SECTION ATTACHED TO THE FRONT PANEL TO SUPPORT ANGLED JOINTS

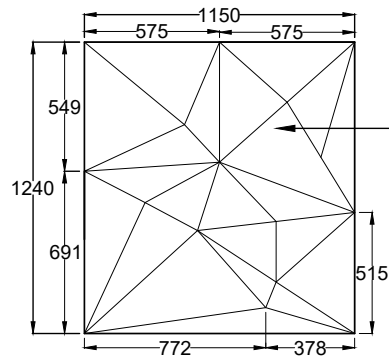


DETAILED JOINTS  
Scale 1:10

STEEL ANGLE ATTACHED TO THE FRAME TO HOLD THE FRONT PANEL



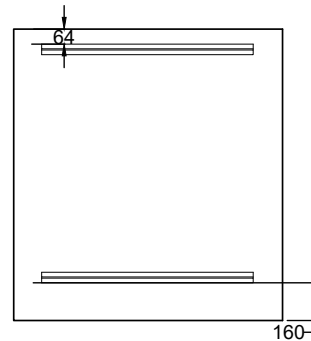
TOP VIEW  
Scale 1:20



FRONT ELEVATION  
Scale 1:20

**BASE CLADDING PANEL**

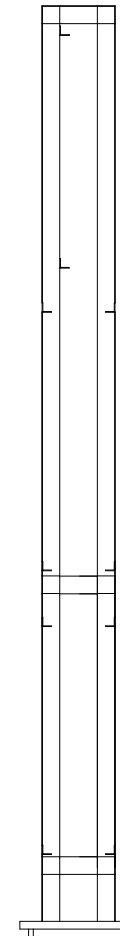
BASE CLADDING PANEL  
Engrave Triangular Prism Pattern  
Material: 6061 Alloy, 3mm Thick  
Quantity: 2  
For manufacturing, contact Blake Group  
Website: [blakegroup.co.uk](http://blakegroup.co.uk)  
Contact: 0131 554 1646



BACK ELEVATION  
Scale 1:20



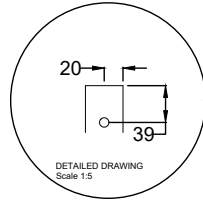
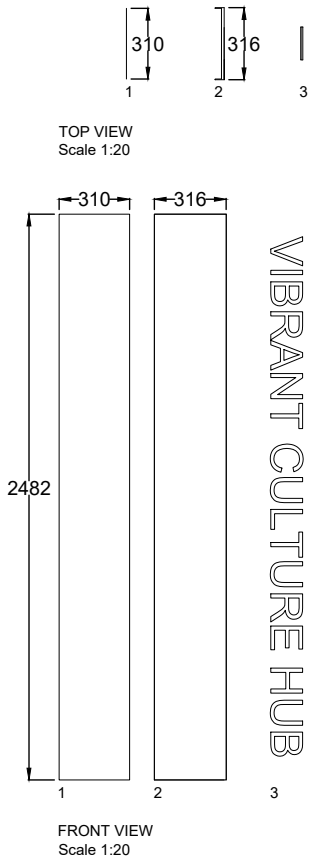
LEFT ELEVATION  
Scale 1:20



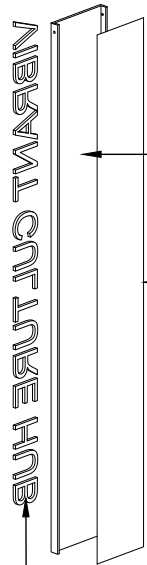
FRAME  
Scale 1:20

<b>Name</b>	
Silma Bahuwayrith	
<b>Project Title</b>	
VIBRANT CULTURE HUB	
<b>Drawing Title</b>	
PYLON SIGN	
<b>Scale</b>	<b>Date</b>
1:20 @ A3	31-70-2024





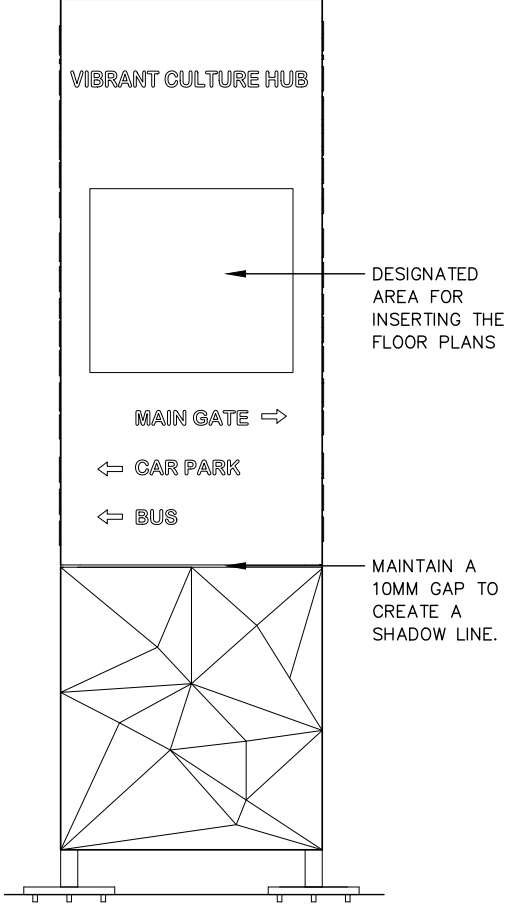
Secure the perforated panel to the frame using countersunk (CSK) screws painted with 2PAK white paint, part number PT.02.



3MM PERFORATED SIDE CLADDING PANELS.

Secure the rear panel to the frame structure using 13mm countersunk (CSK) screws.  
DESCRIPTION: SIDE CLADDING BACKING PANEL 2MM  
MATERIAL: 6061 ALLOY  
QTY: 2 FOR LEFT & RIGHT SIDE.

LETTERING 6MM ALUMINUM  
MATERIAL: 6061 ALLOY  
FINISH: PT.02-2PAK  
PAINTED WHITE SATIN  
QTY: 2



PYLON SIGN

<b>Name</b>	
Sima Bahuwayrith	
<b>Project Title</b>	
VIBRANT CULTURE HUB	
<b>Drawing Title</b>	
PYLON SIGN	
<b>Scale</b>	<b>Date</b>
1:20 @ A3	31-70-2024