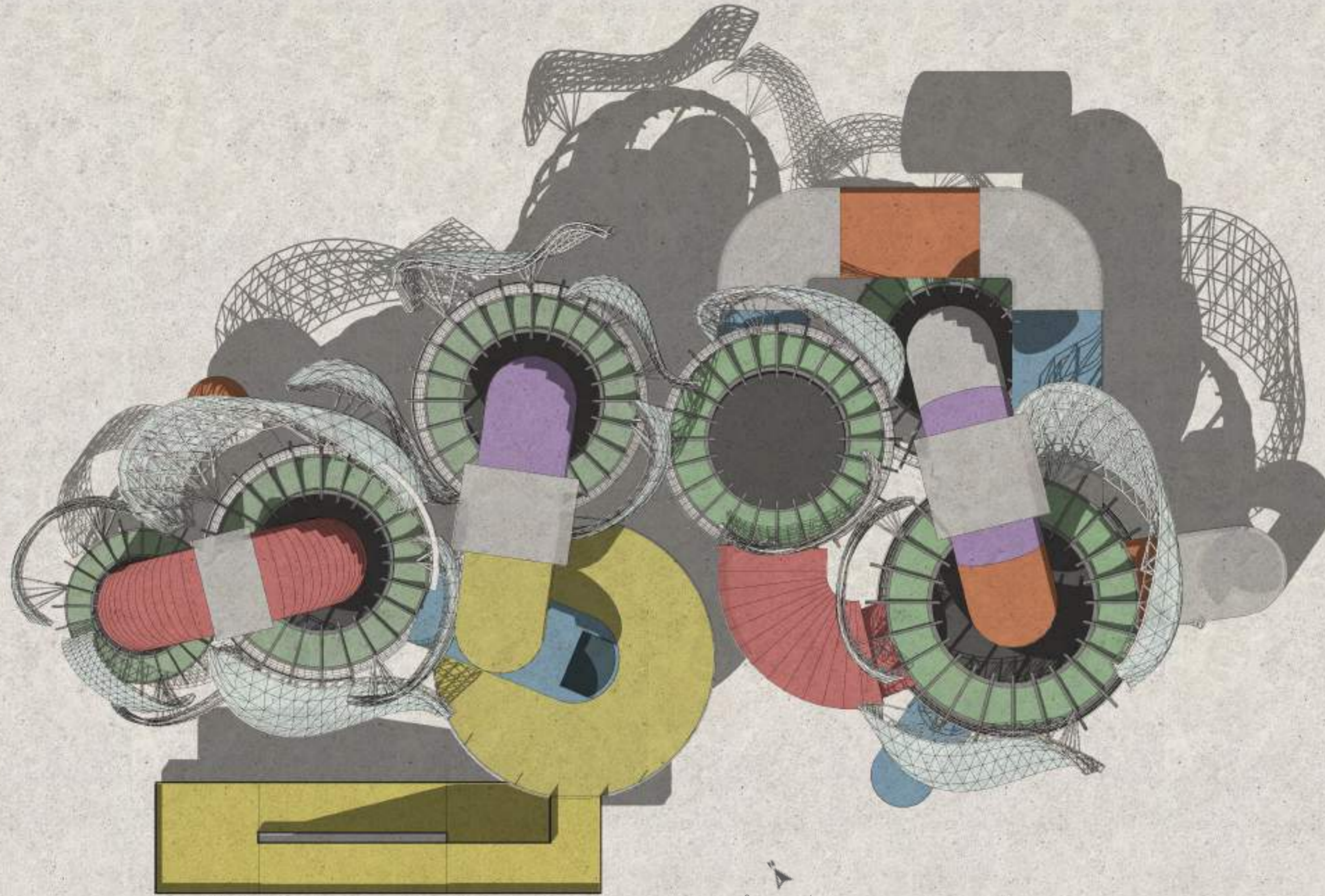


03. Reconnection and inclusion

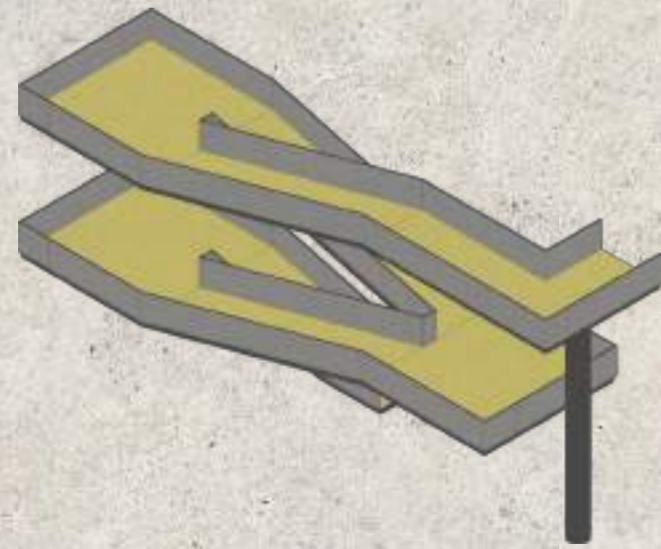
3.1 axonometric drawing



3.2 plan and elements

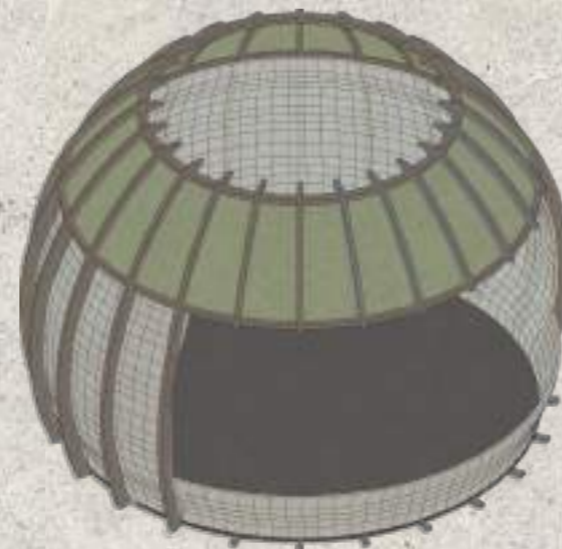


plan drawing



bridge

The bridge acts like a hand that welcomes the public in, providing a pleasant connection between a building and a public space. And the bridge does more than just connect, it can also provide a place for people to rest and enjoy the beautiful views of the city.



core

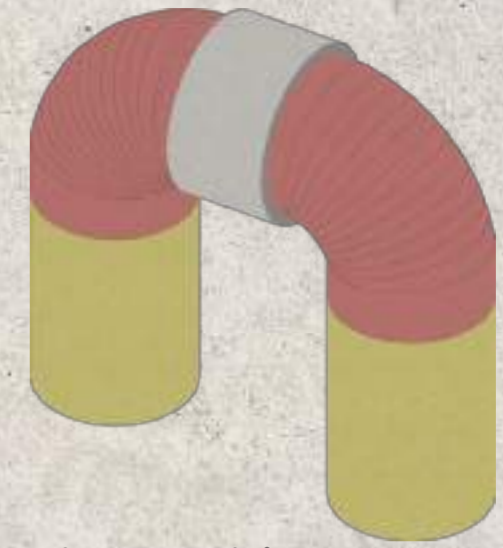
The core is the main functional space. The core structure is mainly a frame plus a glass wall, with an opening on the top to provide conditions for the entry of pipes.

And the area of each core is equivalent. There is no distinction between primary and secondary, and they are all equally important.



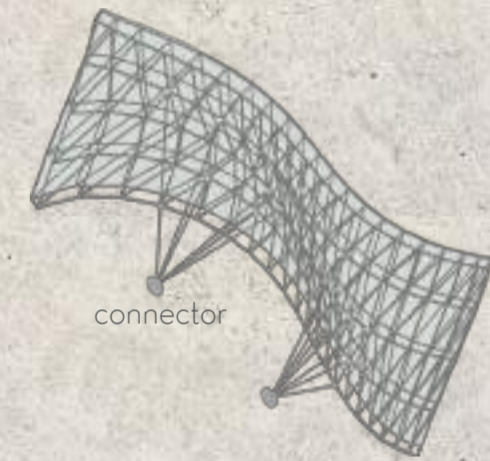
column

The structure comes from the Roman columns at the entrance of the Customs Building. The function of the columns themselves is to support, so I transformed the vertical lines on the surface of the columns into a structure that supports the core. They support the core above like the umbrella cap of a mushroom.



pipe corridor

The connection between pipes and corridors is obvious. They both have the function of connection, so I use pipes to connect public areas and buildings, and cores to cores. These pipes are the "corridors" between them. There are also transparent parts in the pipes for viewing.



connector

shell

As mentioned before, the shells are for privacy, protection, and more. Here, they combine the functions of windows and walls. They wrap around the core like an eggshell, protecting it while blocking some of the outside view, but the glass material allows people inside to see the city view. They are connected to the core through connectors.

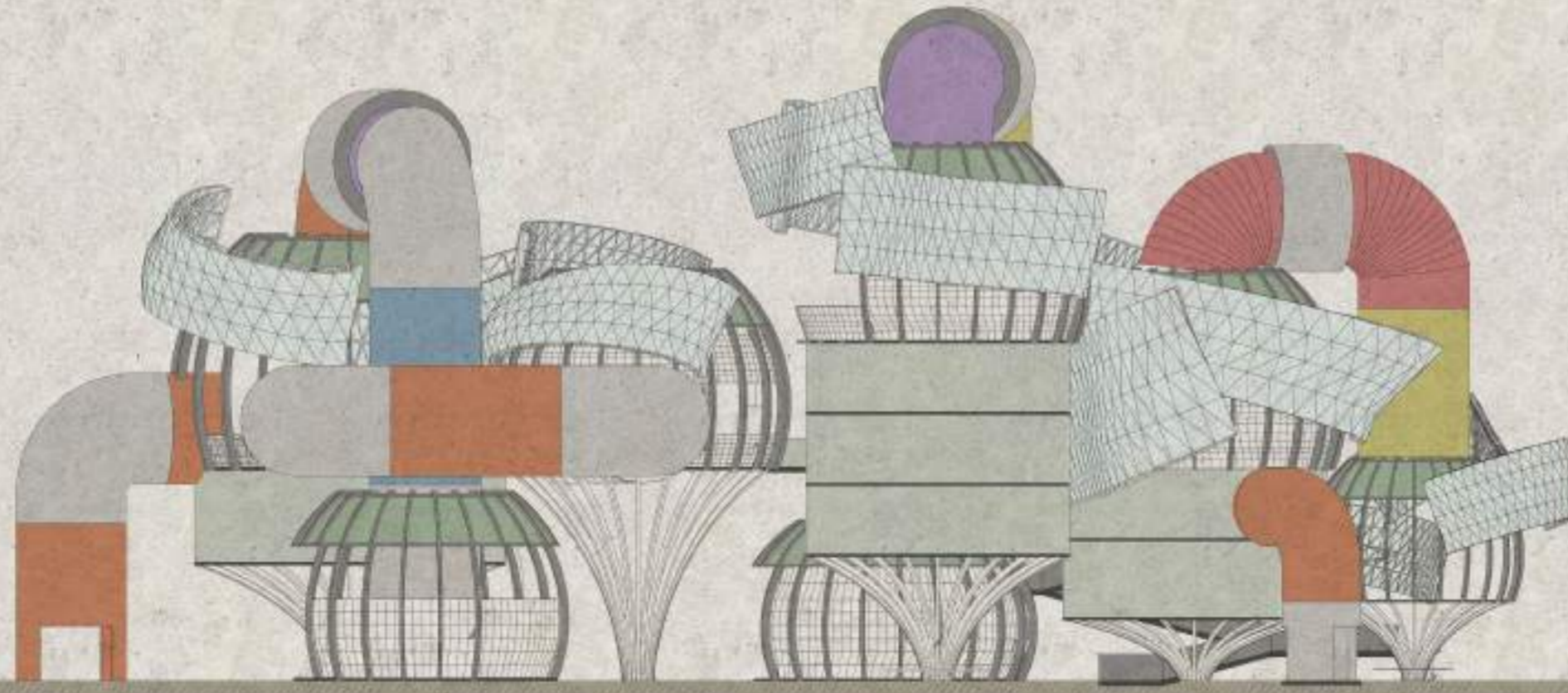
3.3 elevations



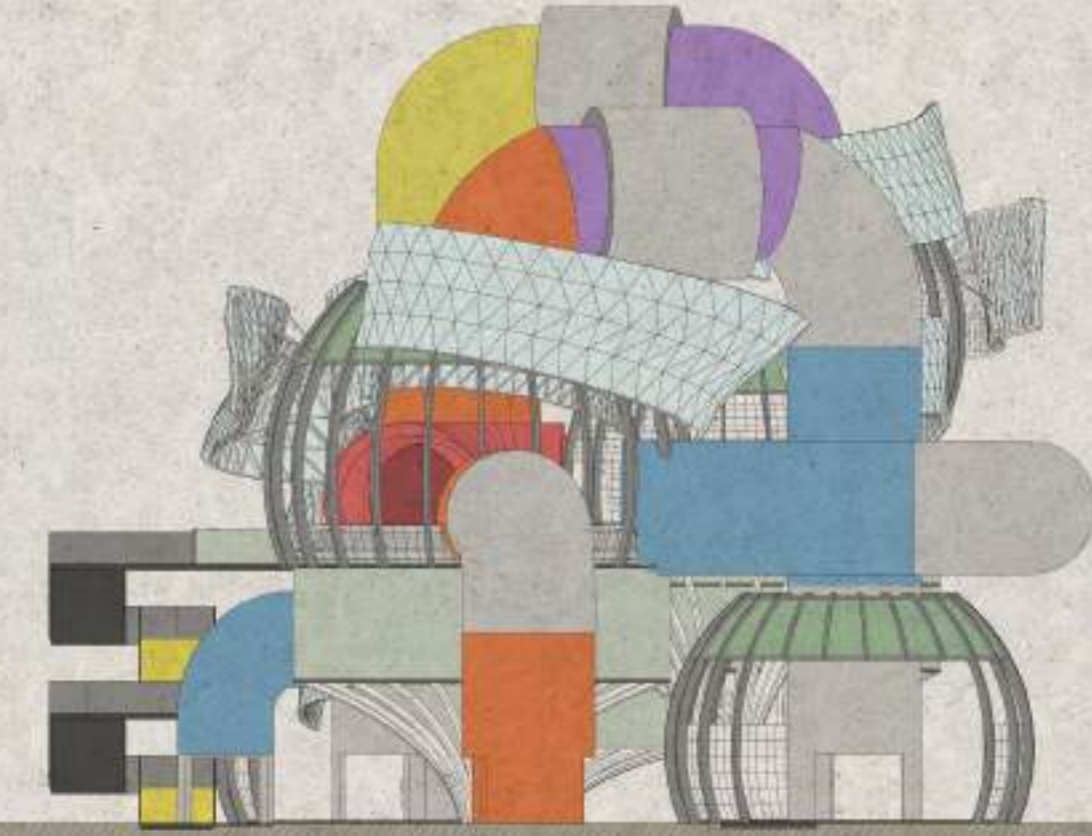
southwest elevation



northwest elevation



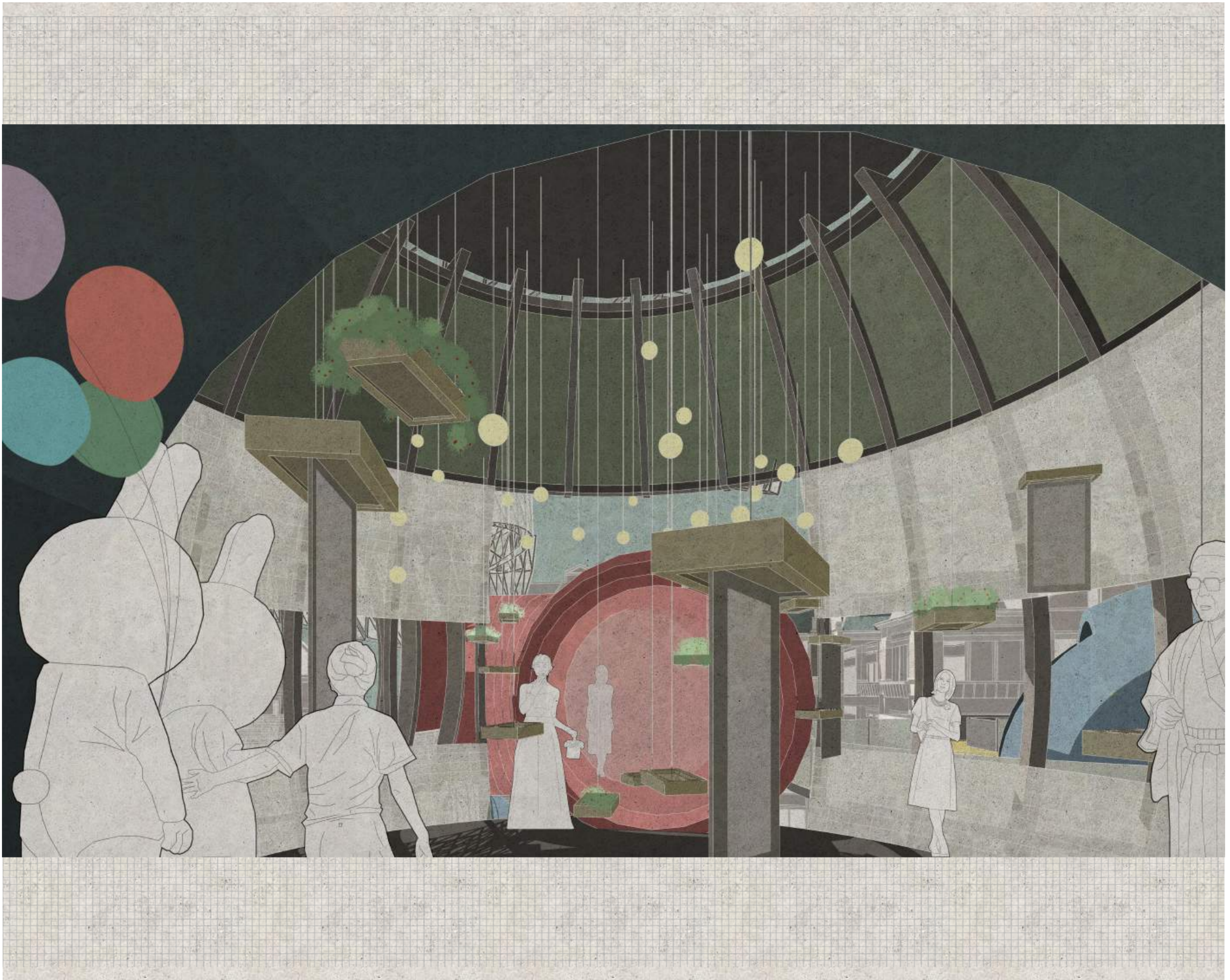
northeast elevation



southeast elevation

3.4 collages







04. Reflection

conclusion

In general, our current urban design, architectural design and interior design are still full of exclusionary elements. One reason for this phenomenon is the exclusion of current social rules and social ideas; another reason is the durability of architecture, that is, the concept reflected by the architecture is the concept when it was built.

The exclusion of social rules and social ideas is largely manifested in the exclusion of marginal groups. The hegemony of the mainstream group makes urban design, architectural design and interior design meet the aesthetic and functional needs of the mainstream group. Therefore, opposing architectural exclusion is fundamentally opposing discrimination and mainstream hegemony.

The durability of architecture provides us with an opportunity to explore past rules. By feeling the space, we can feel the social relations of the past. These concepts are inappropriate now, which is why we need to transform the space and redesign.

In my design, I mainly tried the three dimensions of architecture, space and elements through deconstruction and reorganization. At the architectural and spatial levels, I am quite satisfied with the research results of this design method. The building as a whole is not closed but connected to the public space; at the element level, I split the form and function of windows, pipes, eggshells and columns and gave them new forms and functions.

The original operating rules of the building were broken, and I established new operating rules. I hope that people can think about the meaning of breaking rules when they are in such a space.

' I know they accuse me of arrogance, and perhaps misanthropy, and perhaps of madness. [...] Since then my loneliness does not pain me, because I know my redeemer lives and he will finally rise above the dust. If my ear could capture all the sounds of the world, I should hear his steps. I hope he will take me to a place with fewer galleries fewer doors. [...] "Would you believe it, Ariadne?" said Theseus "The Minotaur scarcely defended himself."

- Borges, Jorge Luis, *The house of asteron*, 1964

In real life, although the Asterions are trapped in a maze of arrogance, prejudice and abuse, I think the ending is not to be killed by the brave and freed, but to break through the siege.