



**Main Space**  
 Main image of ground and first floor from east elevation view. Two separate perspective on each floor, show both floors and ceilings. Add children with activities. Light from above show shadow effect of nets. Hanged lighting on ground floor provide lights for knit seating. Suspended ceiling cover with knits and add led light effect, highlight the organic shape and add fun.



**Physical Model**  
 Physical of main space in child resilience centre, showing climbing net connecting two floors and playground. Human figures showing activities and dimension.

D

M

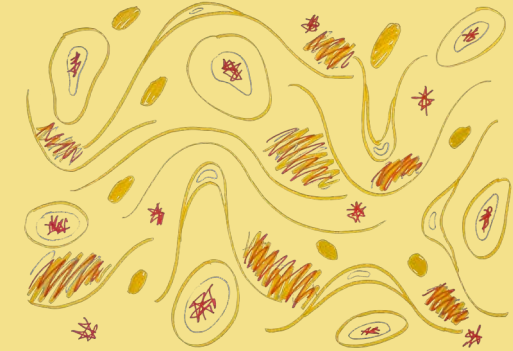


Child resilience centre in previous Edinburgh church inserts "safety net".



**Child Resilience Centre**

**Physical Model**



**Concept**

A concept diagram for child resilience centre. Create a warm and welcoming atmosphere that heals children and help with feelings. Bad emotions gradually accommodated, dissolved and eventually disappear.

Z

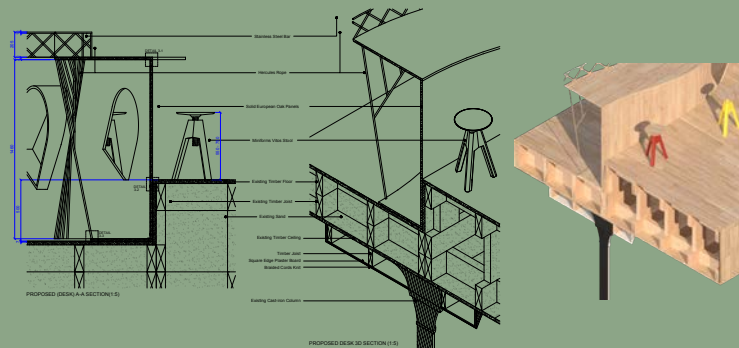
P · O · R

T · F · O

L · I · O

**Detail**

Proposed desk detail, section and axonometric detail showing desk, tunnel and existing floor structures.



**Visual**

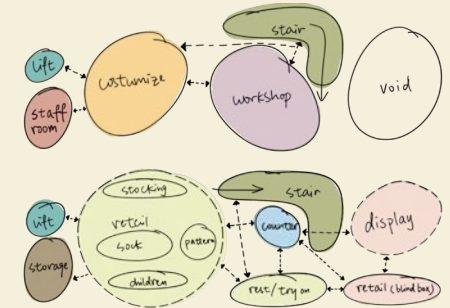
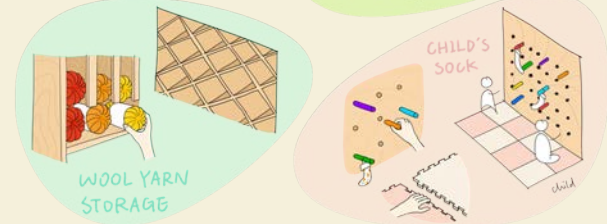
Bird view from above climbing net, show the transparency of net material and steel structure that support net. See playground and bar area below. Add play sets and children to show usage of space.



G

Interior Design  
 Shirley  
 2024.5

S



Colorful display ideas, with wool and timber as main material, create a natural and comfortable scene. Several area for customer all ages to different functions: elderly people, middle aged and children. Display products in different ways: blind box, hanging, lying on the shelf, in blanket, on chairs. Encourage exploration and discovery in store.

**Display**

**SOCK LAND**

Weave a world of colourful socks with yarn. Retail, knit workshop and customize.

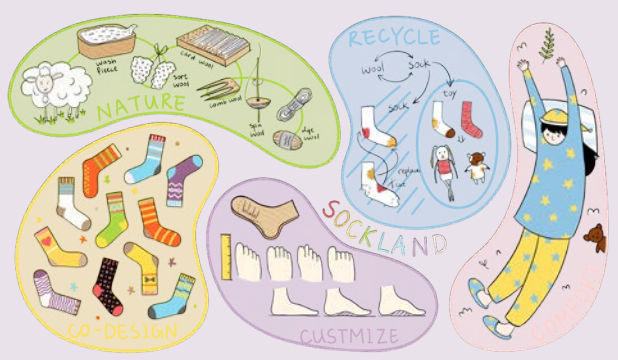
**Shop Front**

Fabric installation appears to be woven with bulb light in between gaps. Small brand name with light behind it. Physical model showing shop front.



**Concept**

Socks show personality by different matches. Sockland is a colorful sock wonderland, a home-like, relaxing shop. Design for all kinds of feet shape, catering for everyone's different needs and preferences, therefore creating one-of-a-kind socks.



**Visual**

View from bird view and eye level perspective of tron kirk. Showing the bookshelves and seats for study areas. Strip light from above illuminates books.

**Light Strategy**

Sketches of light strategy of tron kirk library. Dim and narrow corridor help focus on books. Look down to marlin wynd through strip opening on floor.



**Tron Kirk Library**

Library for rare books in previous Edinburgh Tron Kirk stands on Marlin's Wynd.

**Proposal**

Axonometric visual and section show the existing Tron Kirk and interior layout of floors. Design response to existing building by step backwards.

